

FREE ART TOURS IN FEBRUARY • WWW.MAUIOPENSTUDIOS.COM

THE 6TH ANNUAL
MAUI

OPEN STUDIOS EVENT 2016



SELF-GUIDED TOURS:
VISIT THE STUDIOS AND EXHIBITION SPACES OF ARTISTS AND ARTISANS ON THE ISLAND OF MAUI, HAWAII
EVERY FEBRUARY EVERY YEAR

BEGINS SAT.
FEBRUARY 6
+ 3 WEEKENDS

GUIDEBOOK

OVER 90 PARTICIPATING ARTISTS AND ARTISANS



Susie Burnside-Monroe • Wknd 1



Nansy Phleger • Weekend 3



Roberta Ann Weisenburg • Wknd 1



Bonnie Sol Hahn • Wknd 1



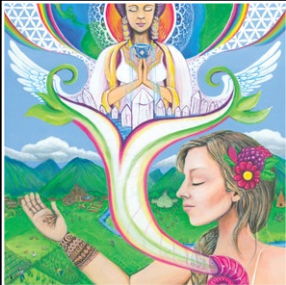
Bonnie Fox • Weekend 1



Linda Peterson • Wknd 1



Mary Ann Leigh • Wknd 3



Melissa Bruck • Wknd 2



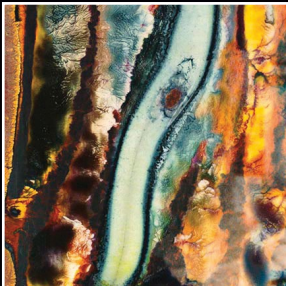
Marylynn Holland • Weekend 3



DiGiacomo Fine Art • Wknd 1



Sarah Soward • Weekend 1



Shawn Power • Weekend 1



Michael Stark • Weekend 3



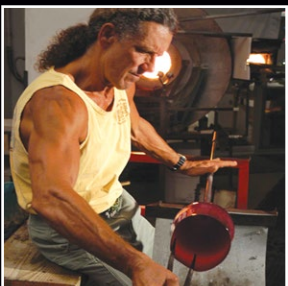
Ann Pistillo • Weekend 3



Podge Elvenstar • Wknd 3



Sean Baba • Weekend 2



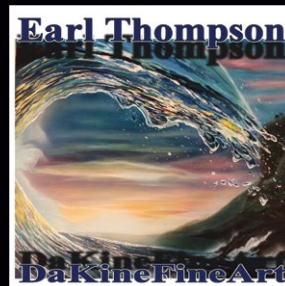
Rick Strini • Weekend 2



Semoia Lin • Weekend 3



Brian Persha • Weekend 1



Earl Thompson • Weekend 3



Susie Burnside-Monroe • Wknd 1



Nancy Phleger
Portrait Artist & Painter
Weekend 3

nansyphleger@icloud.com • (808) 662-8642
www.nansyphleger.com



"Dr. Patti Virtue" - Finalist
Portia Geach Portrait Competition, Sydney, Australia.

Jim's Wood N Glass

Artist Jim Smith
www.jimswoodnglass.com
jimswoodnglass@yahoo.com

I combine the natural beauty of hand carved hardwoods with the vibrant colors of fused glass to create unique and custom 3D art



African Reflections

Visit me at

Opening celebration Saturday Feb 6, 5-8pm Pa'ina Culinary Arts Center
Weekend #1 Feb 13&14 Children's Studio at the Hui No'eau, Makawao
Weekend #3 Feb 27 & 28 Under the Banyan Tree, Lahaina

Welcome to MOS 2016!

We're back for our 6th year and we thank you for being here with us! Last year's event was a record-breaker for art sales made between art collectors and the MOS artists. These sales benefit the artists 100% without any commissions so this is great support for the artists and their careers. The artists also reported the estimated number of visits to their venues which resulted in more visits than any other year. We are growing! This is all exciting as we move forward into this 2016 event and into the future.

If you are with us for the first time, welcome to one of Hawaii's most exciting art events. And if you are back for another year of MOS, we hope that you enjoy it as much as you have in the past. This year's Opening Celebration and Preview Exhibition is at a new venue that we are all excited about, the Maui Culinary Academy at UHMC.

In MOS 2016, our artist roster includes many veteran participants and many first-time MOS artists. It includes a wonderful mix of emerging artists, some of whom have never shown their work publicly before, to renowned internationally-collected established artists and everything in between. It brings me great joy to be able to facilitate a connection between you and the artists who are participating in the MOS event. Whether you're a first-time collector or a seasoned one, there is something for everyone in MOS. Pick your favorites and away you go!



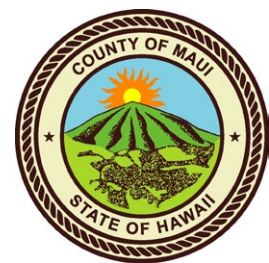
Photo: Mark Gebhardt

Thank you for joining us and for supporting our Maui art community. Have fun on your tours and happy art collecting!

Aloha, Carolyn Quan
MOS Producer/Artist

Thank you to our 2016 Event Sponsors

whose support helps us to fulfill our mission of connecting artists with art-lovers and art collectors on Maui.



Contents and Event Schedule

Opening Celebration + Preview Exhibition
Saturday, February 6 • 5pm - 8pm **NEW VENUE!**
Pa'ina Culinary Arts Center – Home of Maui Culinary Academy, University of Hawaii Maui College
310 W. Kaahumanu Ave., Kahului (Pa'ina Building)

Weekend 1 Artist Open Studios
UPCOUNTRY MAUI

Saturday/Sunday February 13 + 14 • 11am - 6pm
Makawao _____ Page 3 - 7
Pukalani _____ Page 7
Kula _____ Page 8 - 10

Weekend 2 Artist Open Studios
CENTRAL MAUI, NORTH SHORE

Saturday/Sunday February 20 + 21 • 11am - 6pm
Wailuku and Kahului _____ Page 11 - 12
Haiku _____ Page 12 - 13

Weekend 3 Artist Open Studios
WEST + SOUTH MAUI

Saturday/Sunday, February 27 + 28 • 11am - 6pm
Kaanapali and Lahaina _____ Page 14 - 17
Kihei _____ Page 17 - 18
Wailea _____ Page 19

Artist Directory by Last Name Page 22
Artist Directory by Medium Page 23

We encourage you to think GREEN. SHARE rides, SHARE guidebooks or use our paperless website and Google maps to plan your tours. Please recycle this guidebook or keep it for reference throughout the year!

Published and Produced by Dream World Media LLC
Printed on GO GREEN recycled paper!

* Information provided in this guidebook was supplied to us by the artists. Any misrepresentation of the artists, artists' locations, their art, or their events is not the responsibility of the organizers.



Dream World Media LLC • SF Bay Area, CA
(415) 450-1307 • www.MauiOpenStudios.com
mauiopenstudios@gmail.com

MONICA GUILLORY

LANDSCAPE & STILL LIFE PAINTINGS IN OIL

WWW.MONICAGUILLORY.COM

808-740-4028



SATURDAY 2/13 & SUNDAY 2/14 11:00 AM TO 6:00 PM

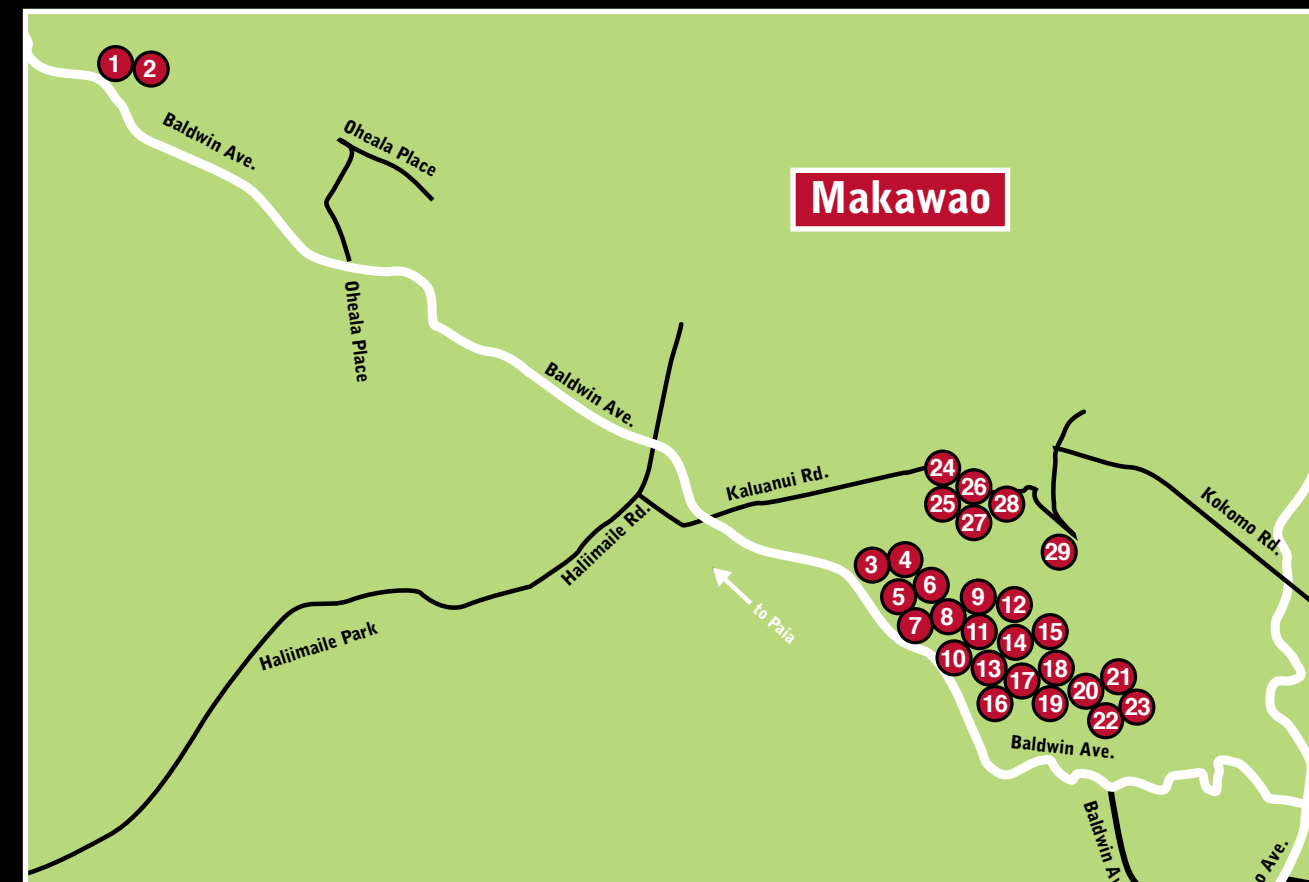
HUI NO'EAU VISUAL ARTS CENTER - 2841 BALDWIN AVENUE - MAKAWAO, HI 96768

23

WEEKEND 1

UPCOUNTRY
OPEN STUDIOS

FEB 13 + 14 • 11AM - 6PM



*These maps are not to scale and not guaranteed accurate. We highly recommend that you have a **Maui road map** or **GPS** for more detailed and accurate information during your tours.

EARL THOMPSON ART.COM



808.298.0134

DAKINE FINE ART.COM

... DO SOMETHING THAT MOVES YOU

70

1 Deb Lynch

Abstract Realism

Deb is an award winning, internationally collected artist, involved with art since childhood.

Makawao
1799 Baldwin Ave.

- Handicap accessible
- Refreshments
- Live demonstration
- Price range: \$50 - \$3,000

deblynchstudios@gmail.com
(808) 214-8908
www.deblynch.com



2 ARTbyRT Raleigh Timmins

Watercolors

I'm a well known watercolorist. I've been working in gouache, casein and oils. My oils and casein on board haven't been shown until this Open Studio event.

Makawao
1799 Baldwin Ave.

- Handicap accessible
- Refreshments
- Live demonstration
- Price range: \$20 - \$850



Artbyrt@live.com
(808) 344-1823
www.ARTbyRT@etsy.com

3 Hui No'eau Visual Arts Center: Ceramic Studio



Catch local Maui ceramicists hand-building or on the potter's wheel, spinning their clay into art. Live demos and Hui 2nds for sale.

Makawao
2841 Baldwin Ave.
• Handicap accessible
• Live demonstrations

info@huinoeau.com
(808) 572-6560
www.huinoeau.com

4 Hui No'eau Visual Arts Center: Printmaking Studio



The printmaking artists engage in experimental, but precise artwork using the printing presses and other high-end tools available in the studio. Visit the printmaking studio for live demonstrations throughout the weekend.

Makawao
2841 Baldwin Ave.
• Handicap accessible
• Live demonstrations

info@huinoeau.com
(808) 572-6560
www.huinoeau.com

11 Maggie Costigan Handcrafted Jewelry



Unique jewelry for everyday wear and special occasions, handcrafted in recycled sterling silver and 18k/14k gold, with precious and semi-precious stones.

Makawao
Hui No'eau Visual Arts Center
2841 Baldwin Ave.

• Handicap accessible
• Refreshments
• Live demonstration
• Price range: \$30 - \$500

magonmaui@gmail.com
(808) 264-0447
www.maggiecostigan.com

12 Lynette Pradiga Mixed Media Artist



Oil paint, layers of paper, vintage snippets, and mixed media collage make 2016's offerings as exciting to me as they will be to you! I'm thrilled you're coming!

Makawao
Hui No'eau Visual Arts Center
2841 Baldwin Ave.

• Refreshments
• Price range: \$4 - \$2,400

lynette@lynettepradiga.com
(808) 633-4573
www.lynettepradiga.com

5 Hui No'eau Visual Arts Center: Jewelry Studio



The Ginny & Art McCoy Jewelry Studio artists maneuver the many tools and metalsmith processes in this state of the art studio! Visit the jewelry studio for live demonstrations throughout the weekend.

Makawao
2841 Baldwin Ave.
• Handicap accessible
• Live demonstrations

info@huinoeau.com
(808) 572-6560
www.huinoeau.com

6 Hui No'eau Visual Arts Center: Glassblowing Studio



Glassblowing demos! Come meet the artist and watch as they work. Purchase a glass piece or sign up for a class to make one of your own. Get to know the Hui artists; open to the public year round!

Makawao
2841 Baldwin Ave.
• Handicap accessible
• Live demonstrations

info@huinoeau.com
(808) 572-6560
www.huinoeau.com

13 MK Maui Functional Ceramics



Marianne Klaus combines motifs inspired by the beauty of Maui with the traditional Swiss art of paper-cutting to create colorful and functional ceramics.

Makawao
Hui No'eau Visual Arts Center
2841 Baldwin Ave.

• Handicap accessible
• Live demonstration
• Price range: \$11 - \$120

marianne.klaus@gmail.com
(808) 298-2494
www.facebook.com/MKMaui

14 Carolyn Quan Photo Collage and Mixed Media Award-winning artist.



Original photography artistically collaged into magical dreamlike creations. Limited edition canvases, mini canvases, metal prints, wall hangings, art cards.

Makawao
Hui No'eau Visual Arts Center
2841 Baldwin Ave.

• Refreshments
• Price range: \$4 - \$2,100

cquanartist@gmail.com
(415) 450-1307
www.CarolynQuan.com

7 Sarah Soward Contemporary Wildlife Artist



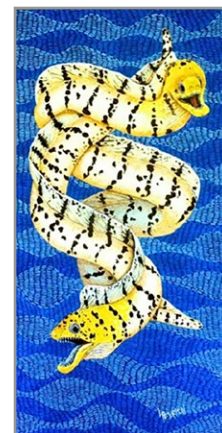
Sarah specializes in painting endangered animals and has a penchant for both surrealism and colorist work. Original oils, gouache, and limited edition prints.

Makawao
Hui No'eau Visual Arts Center
2841 Baldwin Ave.

• Refreshments
• Live demonstration
• Price range: \$10 - \$4,000

sarah@sarahsoward.com
(415) 312-6868
www.sarahsoward.com

8 Linda Peterson Acrylic and gold/silver leaf realism and impressionist.



Colorful depictions of Hawaiian flora and fauna will be displayed in miniature as well as standard, larger sizes. Prints and cards will also be available. Commissions welcome!

Makawao
Hui No'eau Visual Arts Center
2841 Baldwin Ave.

• Handicap accessible
• Price range: \$4 - \$800

pele96@aol.com
(808) 238-0279

15 Brian J. Persha Ceramicist



Over 50 years of working in high-fire porcelain: Hand-thrown, hand-built vessels, with attention focused on exciting color and aesthetically powerful designs.

Makawao
Hui No'eau Visual Arts Center
2841 Baldwin Ave.

• Price range: \$30 - \$3,000

brianpersha@gmail.com
(808) 866-7114
www.brianpersha.com

16 Shawn Power Abstract Expressionist



Vibrant colors & light, shadows & shapes, figures & images come to life on plexiglas panels. Capturing the transformation of beauty in obscurity. Innovated Art!

Makawao
Hui No'eau Visual Arts Center
2841 Baldwin Ave.

• Refreshments
• Price range: \$1,000 - \$20,000

ShawnPower@ShawnPowerFineArt.com
(808) 298-5761
www.ShawnPowerFineArt.com

9 Roberta Ann Weisenburg Jewelry



Come out and meet Roberta and see her latest line of Hand Made jewelry. Bangles, Rings and Earrings using the ancient process of Granulation and Fusing.

Makawao
Hui No'eau Visual Arts Center
2841 Baldwin Ave.

• Price range: \$65 - \$6,000

roberta@roberta-ann.com
(415) 609-1875
www.roberta-ann.com

10 Bonnie Fox Oil, Acrylic Resin, Paper Sculpture



Color interaction, luminosity and compositional design are primary in my art. I strive for a viewer dialogue that produces inner peace and positive feelings.

Makawao
Hui No'eau Visual Arts Center
2841 Baldwin Ave.

• Handicap accessible
• Refreshments
• Price range: \$25 - \$1,200

bonniefoxfinearts@gmail.com
(808) 665-1571 • www.bonniefoxfinearts.com

17 Annie Lockhart Painter, Photographer & Mixed Media Artist



I create intuitively, trusting that one mark will lead me to the next! Soulful is the best way to describe my process. I am inspired by my love of nature.

Makawao
Hui No'eau Visual Arts Center
2841 Baldwin Ave.

• Handicap accessible
• Refreshments
• Live demonstration
• Price range: \$200 - \$25,000

annietinx@gmail.com
(409) 539-8441
www.annielockhart.com

18 Jim Smith Mixed Media



I combine hand carved woods with fused glass to create custom one of a kind artwork. Visit me Weekend 1 at the Hui No'eau or Weekend 3 under the Banyan Tree.

Makawao
Hui No'eau Visual Arts Center
2841 Baldwin Ave.

• Refreshments
• Price range: \$35 - \$25,000

jimwoodnglass@yahoo.com
(808) 205-9898
www.jimwoodnglass.com

19 Bonnie Sol Hahn
Landscape Oil Painter

bonniesol@bonniesol.com
(808) 769-1747
www.bonniesol.com

Vibrant and bold oil paintings. I'm drawn to the way light surfs the waves, the way sunset streaks across the sky, and the way wind blows through the palms.

Makawao
Hui No'eau Visual Arts Center
2841 Baldwin Ave.

- Refreshments
- Live demonstration
- Price range: \$25 to \$2,500

20 Jasmine Honey Designs
Jewelry

jasminebustamente@gmail.com
(808) 269-7287
www.jasminehoneydesigns.com

In her Makawao studio, Jasmine combines 14k gold, sterling silver, a rainbow of gemstones & Tahitian pearls, to create one of a kind pieces.

Makawao
Hui No'eau Visual Arts Center
2841 Baldwin Ave.

- Handicap accessible
- Food and refreshments
- Live entertainment
- Live demonstration
- Price range: \$30 to \$1,300

27 Janet Davis
Mixed Media

janet@maui.net
www.janetdavis.com

Janet has been living and showing her paintings on Maui for over 20 years. Her works can be seen at Viewpoints Gallery and Maui Hands as well as at her studio at 200 Kaluanui in Makawao.

Makawao
Tom Faught Studio
200 Kaluanui Rd.

- Handicap accessible
- Refreshments
- Live demonstration
- Price range: \$100 - \$7,000

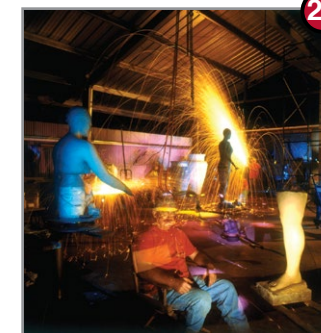
28 Tom Faught
Mixed Medium Artist

Photo by Tony Novak Clifford

faught@maui.net
(808) 280-1676 • www.tomfaught.com

A master ceramicist and sculptor, Tom creates custom home furnishings and recently added 2 dimensional digital art on dyed aluminum, to his repertoire.

Makawao
Tom Faught Studio & Foundry
200 Kaluanui Rd.

- Handicap accessible
- Refreshments
- Price range: \$150 - priceless

21 Joanne Hopper
Paintings, Drawings in Silver, Gold and Platinum

joanne@joannehopper.com
(808) 298-9292
www.JoanneHopper.com

Prolific Painter - Silverpoint Drawings - Plein Air - Murals - Still Life - Ex NY Scenic Artist - BFA* RISD - International - Clarity and Connections thru Art.

Makawao
Hui No'eau Visual Arts Center
2841 Baldwin Ave.

- Handicap accessible
- Refreshments
- Price range: \$50 - \$2,500

22 Julie A. Matheis
Jewelry

An eclectic blend of fine art jewelry and production jewelry in sterling silver, traditional stones, and mixed alternative materials.

Makawao
Hui No'eau Visual Arts Center
2841 Baldwin Ave.

- Handicap accessible
- Price range: \$20 to \$12,000

juliematheis@gmail.com
(815) 557-6739

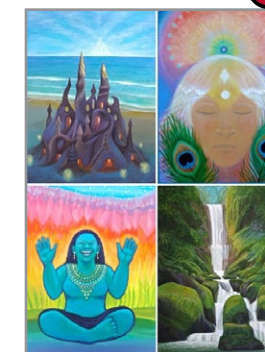
29 Bruce Harman
Visionary and Nature Artist

Inner-directed artwork inspired in meditation for the spirited audience. Images of archetypal figures set in realistic, detailed settings distinguish this work.

Makawao
The Sacred Garden of Maliko
460 Kaluanui Rd.

- Handicap accessible
- Refreshments
- Price range: \$5 - \$300

bruce@harmanvisions.com
(831) 684-1966
www.harmanvisions.com

30 Lesta Bertoia
Acrylic Painter of Magic Realism

I was a successful local artist in PA and have been well received by a small community on Maui. I sometimes channel visual information, and I do portraits.

Pukalani
78 Munoz St.

- Refreshments
- Price range: \$3 - \$350

mlb@lestabertoia.com
(610) 850-1639
www.lestabertoia.com

23 Monica Guillory
Realistic Landscape and Still Life Paintings in Oil

Realistic landscapes and still life of vintage toys, created using traditional techniques that ensure a vibrant realism & archival longevity to my work.

Makawao
Hui No'eau Visual Arts Center
2841 Baldwin Ave.

- Refreshments
- Price range: \$350 - \$2,500

mlguillory@yahoo.com
(808) 740-4028
www.monicaguillory.com

24 Clay Simpson
Wood Sculpture, Woodwork, Wood Furniture

info@simpsonartworks.com
(808) 269-9501
www.simpsonartworks.com

Wildlife Sculpture and fine furnishings in native/exotic woods brought to life with chainsaws, grinders, dremels and hand tools.

Makawao
Tom Faught Studio
200 Kaluanui Rd.

- Handicap accessible
- Refreshments
- Price range: Varied

31 Pamela Neswald
Oil, Acrylic and Mixed Media

Hosted by Honolulu Museum of Art, Art Maui and local galleries and hotels, published in periodicals, BFA from UCSB, Pamela has painted for almost 54 years.

Pukalani
185 Hiolani St.

- Handicap accessible
- Refreshments
- Live demonstration
- Price range: \$50 - \$15,000

pamelaneswald@gmail.com
(808) 573-2768

32 Karuna Santoro
Kiln-formed Glass

Creating with glass is my passion and joy. I've been working with it since 1986 and continue to explore.

Pukalani
245 Hololani St.

- Refreshments
- Price range: \$25 - \$1,500

santoro@karunasantoro.com
(808) 573-1808
www.karunasantoro.com

25 Allen Roger Pufahl
Abstract Expressionist

Influenced by New York artists from 1950-60 Allen has developed work in both media for nearly 50 years. He worked privately with a master artist. He has exhibited in San Francisco, Los Angeles and Santa Fe.

Makawao
Tom Faught Studio
200 Kaluanui Rd.

- Handicap accessible
- Refreshments
- Price range: \$250 to \$4,000

pufahlar@hawaii.rr.com
(808) 280-9376 • www.allenpufahl.com

26 Tim Garcia
Sculptor

gtimmaui@gmail.com
(808) 572-5597
www.maui sculpture.com

Tim works in stone, wood, and metal. He has won awards in California and Hawaii, and has participated in symposiums, in New Zealand and California. His work can be found at Viewpoints Gallery in Makawao and Cedar Street Gallery in Honolulu.

Makawao
Studio Garcia - 200 Kaluanui Rd.

- Handicap accessible
- Refreshments
- Live demonstration
- Price range: \$500 to \$20,000

33 Cathy U'u
Handmade Jewelry

I've been creating handmade jewelry that gives an Island appeal with a little sass, beauty and elegance. My Passion for 15 years.

Pukalani
245 Hololani St.

- Refreshments
- Price range: \$30 - \$250

kachiinc@gmail.com
(808) 281-0454

34 Virginia Pierce
Pastel and Watercolor

Ethereal abstracts and landscapes in pastels and watercolor.

Makawao/Pukalani
260 Aulii Dr.

- Handicap accessible
- Food and refreshments
- Live demonstration
- Live entertainment
- Price range: \$100 - \$5,000

pierce@aloha.net
(808) 250-6538
www.virginiapierceart.com

35 Pamela Hayes

Watercolor and Pastel



My watercolors are intense and vibrant! The pastels use color to imply form, and are visual meditations to capture the moment. Light is everything.

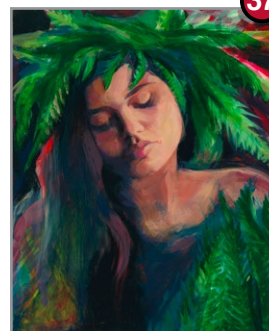
Makawao
1460 Olinda Rd.

- Handicap accessible
- Refreshments
- Live demonstration
- Price range: \$50 - \$1,000

pamelahayes79@yahoo.com
(808) 264-1023

37 Meryl Haywood

Realist Surrealist



Born and raised on Maui, Meryl Haywood is best known for her hypnotic paintings of female forms that are brought to life through surrealism and realism.

Kula
215 Pulehu Nui Rd.

- Handicap accessible
- Food and refreshments
- Live demonstration
- Live entertainment
- Price range: \$400 - \$10,000

merylhaywood@gmail.com
(808) 344-6855 • www.merylhaywood.com

39 Worcester Glassworks

Handblown Glass and Jewelry



Blowing glass since 1969, and the first glass artist on Maui. Now using the Maui sun to run our furnaces. Visit us and enjoy handblown one of a kind glass and jewelry made by the Worcester family.

Kula
Worcester Glassworks
4626 Lower Kula Rd.

- Handicap accessible
- Food and refreshments
- Live demonstration
- Price range: \$40 - \$6,000

info@worcesterglassworks.com
(808) 878-4000 • www.worcesterglassworks.com

41 Eva Roberts

Flow Painter



Standing as loving awareness in the all-connectedness of lifeforce itself and witnessing its fluid expression as poured paint. Enjoy pupus, conversation and the spectacular view, as I show paintings which express the exuberant flow of Maui life.

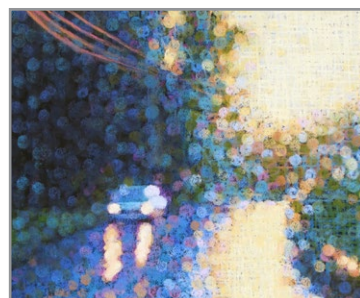
Kula
Eva Roberts Studio
1260 Naalae Rd.

- Refreshments
- Price range: \$100 - \$10,000

evaart@earthlink.net • (808) 346-3165
www.EvaRobertsArtist.com

36 Chelsea Bryce

Pastel Artist



Using a variety of pastel techniques Chelsea explores the influence of rain and mist on the landscape. Japanese water garden with spectacular island views!

Makawao
1460 Olinda Rd.

- Handicap accessible
- Refreshments
- Live demonstration
- Price range: \$50 - \$1,500

chelseabryce@gmail.com
(808) 281-4664

38 Randy Hufford Art

Fine Art Photographer



Award winning art by Randy Hufford, experience living and enjoying life. Randy will be unveiling a new collection of never before seen Upcountry Maui images.

Kula
3697 Lower Kula Rd.

- Handicap accessible
- Refreshments
- Live entertainment
- Price range: \$20 - \$8,000

randy@randyhuffordart.com
(808) 878-4154
www.RandyHuffordArt.com

40 Richard DiGiamcomo

Aluminum / Mixed Media



3-D ocean scene art at its finest on aluminum panels. Panels are etched, color fused and clear sealed to create brilliant unexplainable illusions.

Kula
4758 Lower Kula Rd.

- Handicap accessible
- Refreshments
- Live demonstration
- Price range: \$100 - \$4,000

radaz.digiacomol@gmail.com
(808) 268-3200
www.mauimetalart.com

42 Susie Burnside-Monroe

Naturalist, Fine Art Painter



Creamy delicious oil on linen and amazing watercolors! Come relax and enjoy a 5 Island view, Portraits, Impressions, Reality, Exquisite Florals, Land and Seascapes.

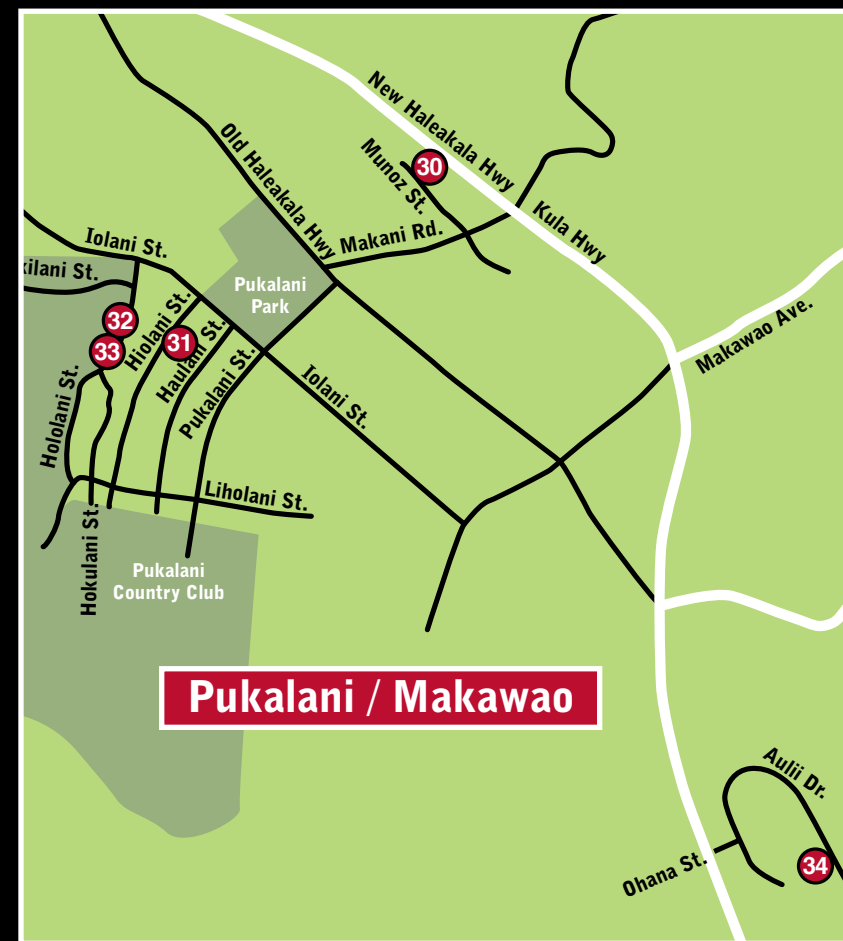
Kula
2315 Kekaulike Ave.

- Handicap accessible
- Refreshments
- Live demonstration
- Price range: \$4 - \$18,000

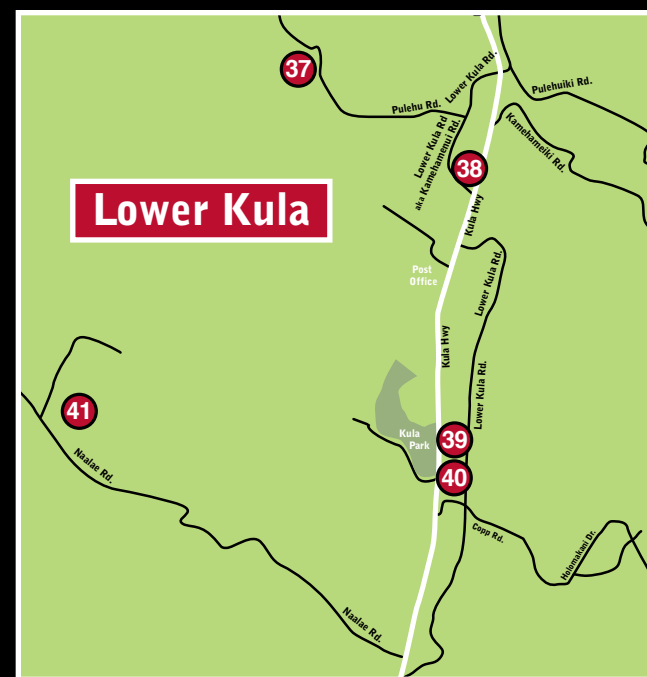
mausie@gmail.com
(808) 866-6017

WEEKEND 1

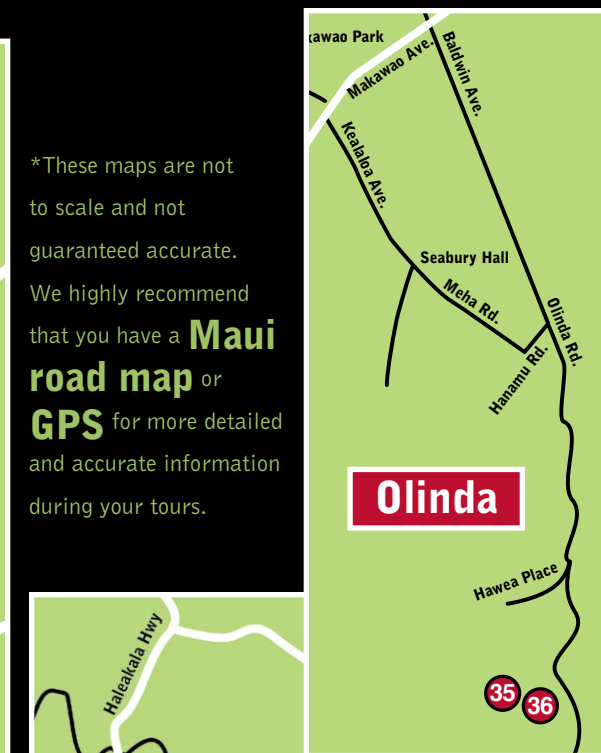
UPCOUNTRY OPEN STUDIOS
FEB 13 + 14 • 11AM - 6PM



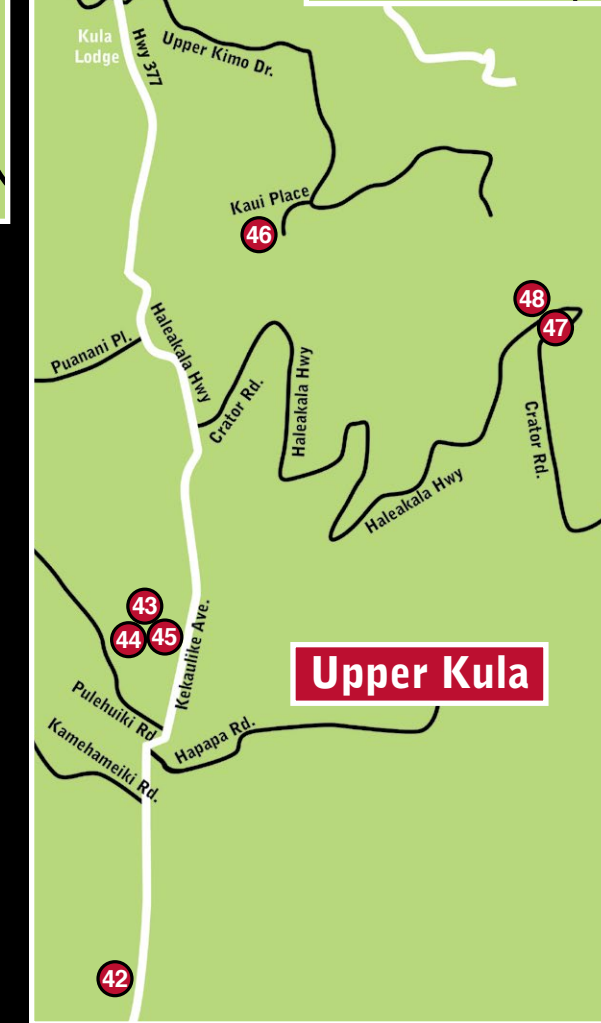
Pukalani / Makawao



Lower Kula

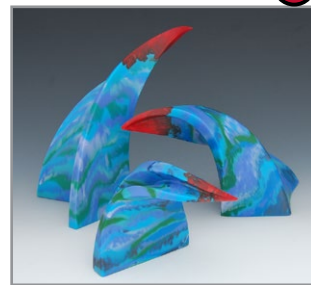


Olinda



Upper Kula

*These maps are not to scale and not guaranteed accurate. We highly recommend that you have a **Maui road map** or **GPS** for more detailed and accurate information during your tours.



43 **Dennis Chamberlain**
Glass Artist/Sculptor
3 Artists, 3 Mediums, ONE FABULOUS LOCATION! Tour my glass studio and browse through an eclectic collection of art and sculpture in a spectacular setting.

Kula
Dennis Chamberlain Studios
Haleakala Berry Farm
2831 Kekaulike Ave.

info@DennisChamberlainArt.com
(808) 298-9331
www.DennisChamberlainArt.com

- Refreshments
- Live demonstration
- Price range: \$25 - \$12,500



44 **Jennifer J. Stephens**
Mixed Media Artist
Jennifer J. Stephens creates many works in found object, paint, photography and digital media that capture her unique perspective.

Kula
Haleakala Berry Farm
2831 Kekaulike Ave.

info@uniquearthawaii.com
(808) 276-2314
www.jenniferjstephens.com

- Refreshments
- Price range: \$10 - \$5,000



45 **Kevin Omuro**
Ceramics
Sculptural and utilitarian pottery influenced by island lifestyles

Kula
Haleakala Berry Farm
2831 Kekaulike Ave.

- Refreshments
- Price range: \$15 - \$1,000

Pulehuguy@hawaii.rr.com
(808) 269-1195



46 **Joe Fletcher**
Plein Air Oil Paintings
Everyday I paint someplace on Maui. Come see what I've found. Tiny to huge juicy paintings. As seen in Viewpoints, Village and Hana Coast Galleries.

Kula
54 Kai Place

kulaartist@hawaii.rr.com
(808) 283-1107

- Handicap accessible
- Refreshments
- Live demonstration
- Price range: \$200 - \$10,200

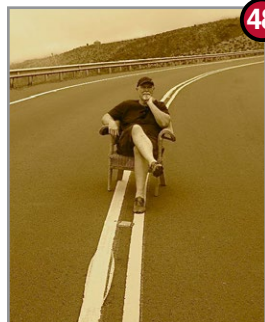


47 **George Allan**
Impressionist Oil Painter
George's love for Maui and its people earned him the 2014 Living Treasure Award from the Lahaina Arts Society. Enjoy his studio and the sale of his artwork and a 2-acre Native Hawaiian plant garden.

Kula
17526 Haleakala Hwy

allans@hawaii.rr.com
(808) 878-3907
www.GeorgeAllan.com

- Handicap accessible (one step)
- Refreshments
- Live demonstration
- Price range: \$10 to \$10,000



48 **Frank B. Shaner**
Abstract Expressionist, Photographer
Painting chose me. At times, when I look at a blank canvas, I don't even know what I'm going to paint. What comes is generated from my na'au (gut).

Kula
Frank B. Shaner Studio
17606 Haleakala Hwy.

rci@maui.net
(808) 351-5463
www.frankbshaner.com

- Handicap accessible
- Refreshments
- Live demonstration
- Price range: \$15 - \$1,500

WEEKEND 2



CENTRAL MAUI + NORTH SHORE OPEN STUDIOS

FEB 20 + 21 • 11AM - 6PM

*These maps are not to scale and not guaranteed accurate. We highly recommend that you have a **Maui road map** or **GPS** for more detailed and accurate information during your tours.



49 **Taryn Alessandro**
Mixed Media Painter
5 year "Best of Maui" artist invites you to experience her innovative painting style & ocean views at her new, poolside home/studio. Also featuring one other artist.

Wailuku
782 Wailupe Drive

- Refreshments
- Live demonstration
- Live entertainment
- Price range: \$5 - \$7,000

info@talessandro.com • (860) 460-8083 • www.tarynalessandro.com



50 **Lynette Pradiga**
Oil Paint and Mixed Media Collage Artist
Oil paint, paper layers, vintage snippets, & mixed media collage make 2016's offerings as exciting to me as they will be to you! I'm thrilled you're coming!

Wailuku
782 Wailupe Drive

- Refreshments
- Price range: \$4 - \$2,400

lynette@lynettepradiga.com
(808) 633-4573
www.lynettepradiga.com



51 **Eric DeMaria**
Woodwork
Come to the KeriWoods shop and find pens, cutting boards, and boxes made from local hardwoods. Diane Ybarra will also be showing her paintings. 2 in 1.

Wailuku
KeriWoods
1161 Lower Main St. Unit E,

- Handicap accessible
- Refreshments
- Live demonstration
- Price range: \$129 - \$625

keriwoods1@gmail.com
(808) 281-9552



52 **Diane Ybarra**
Oil Painter
Maui, dreams, and family provide inspiration for Diane's paintings. She works primarily with oil on wood panels, and will show ceramic sculpture pieces.

Wailuku
KeriWoods
1161 Lower Main St. Unit E,

- Handicap accessible
- Refreshments
- Price range: \$50 - \$1,000

designbyday@sbcglobal.net
(808) 281-2899

Check out our Google Maps on our online artist directory pages at www.MauiOpenStudios.com.
Design your tours using **GPS!**

GO GREEN! SHARE RIDES!

53 Sean Singharaja Baba

Oil Paintings, Watercolor, Mixed Media
With a strong foundation in public art I developed a larger view around our surroundings. Paintings of timeless landscapes depict our surroundings.



Wailuku
North Shore Art and Frame
46 N. Market St.

- Handicap accessible
- Refreshments
- Price range: \$10 - \$10,000

freshislandart@gmail.com
(808) 298-5034

55 Mike Colby

Watermedia
Watermedia is my life. I feel that a painting is more lively than a photo.



Wailuku
North Shore Art and Frame
46 N. Market St.

- Handicap accessible
- Food and refreshments
- Price range: \$100 - \$2,000

colbyartrat@gmail.com
(808) 298-2521
www.michaelycolby.com

57 UH Maui College Art Dept.

Student and Faculty Various Mediums
Tour UH Maui College Art Dept. Meet the 6 faculty and their students. See or try art in clay, paint, print, or photography. Explore fall course offerings.



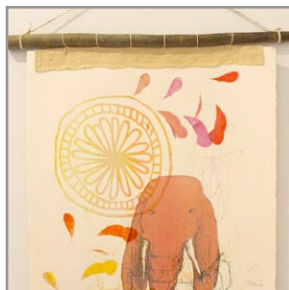
Kahului
UH Maui College Campus
310 West Kaahumanu Ave.
Heona Building - West end of campus

- Handicap accessible
- Live demonstration
- Price range: \$5 - \$500

jowen@hawaii.edu
(808) 984-3202
www.hawaii.edu/maui/art/index.html

59 Em

Explorative Mixed Media
Perspective is the transformative viewpoint of an individual at any given now moment. I'm exploring removing my egoic self from my expression, theoretically.



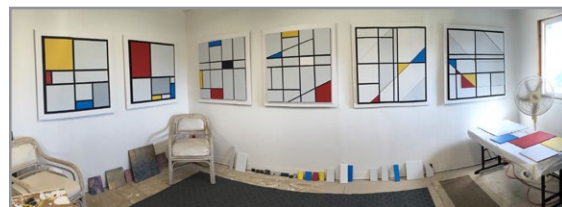
Haiku
The Treehouse
375 W. Kuiaha Rd.
Pauwela Cannery, Unit 24

- Refreshments
- Price range: \$200 - \$600

emtheoriecreative@gmail.com
(985) 981-2501
www.emtheorie.com

60 Gerald Wright

Mixed Media Artist
I have been a full time professional artist for over 15 years. Educated UH Manoa, moved to Hawaii in 1970.



gawartist@gmail.com
(808) 446-2981 • www.gawartist.com

54 Annie Lockhart

Painter, Photographer & Mixed Media Artist
I create intuitively, trusting that one mark will lead me to the next! Soulful is the best way to describe my process. I am inspired by my love of nature.



Wailuku
North Shore Art and Frame
46 N. Market St.

- Handicap accessible
- Refreshments
- Price range: \$200 - \$25,000

annietintx@gmail.com
(409) 539-8441
www.annielockhart.com

56 Carolyn Quan

Photo Collage and Mixed Media
Award-winning artist. Original photography artistically blended and collaged into magical dreamlike creations. Limited edition canvases, mini canvases, metal prints.



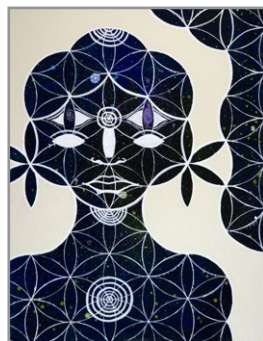
Wailuku
North Shore Art and Frame
46 N. Market St.

- Refreshments
- Price range: \$4 - \$2,100

cquanartist@gmail.com
(415) 450-1307
www.CarolynQuan.com

58 Parker Detchon

New Age Visionary Painter
New age imagery of God created using abstraction and refined order through sacred geometric patterns to create portraits. Truly visionary work. A must see.



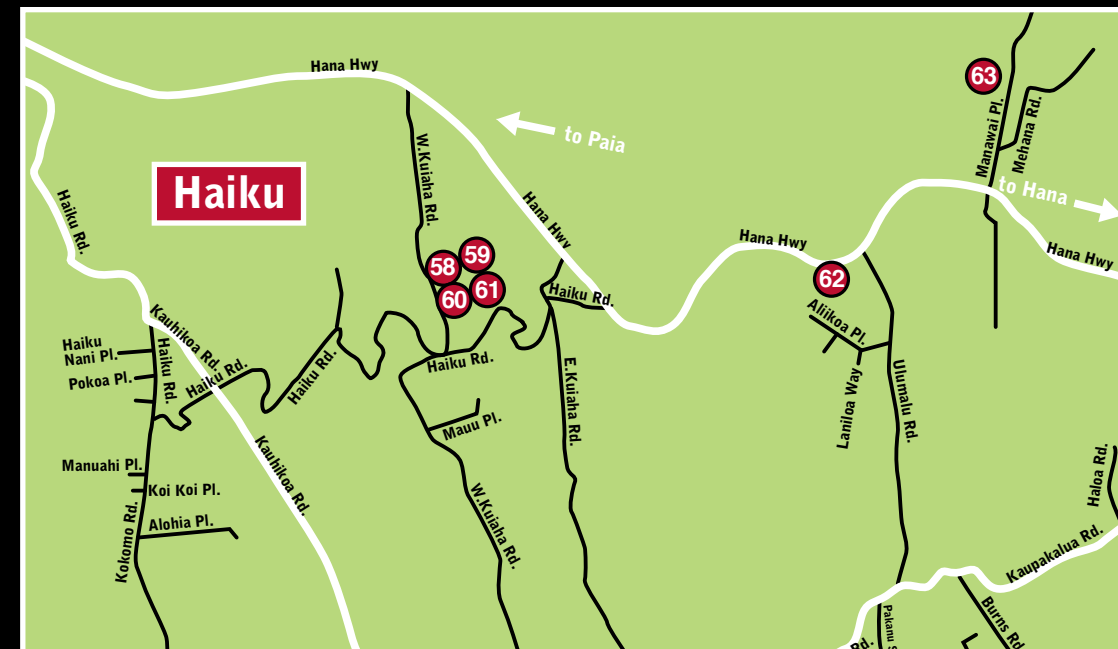
Haiku
The Treehouse
375 W. Kuiaha Rd.
Pauwela Cannery, Unit 24

- Refreshments
- Price range: \$20 - \$4,800

parkerdetchon@gmail.com
(203) 536-8586
www.ParkersPaintings.com

WEEKEND 2 NORTH SHORE + CENTRAL MAUI
OPEN STUDIOS
FEB 20 + 21 • 11AM - 6PM

*These maps are not to scale and not guaranteed accurate. We highly recommend that you have a **Maui road map** or **GPS** for more detailed and accurate information during your tours.



61 Melissa Bruck

Visionary Artist
Melissa is a visionary painter with a colorful body of work containing portraits, landscape and abstract compositions with sacred geometry, symbols and designs.



Haiku
Art by Melissa Bruck
375 W. Kuiaha Rd.
Pauwela Cannery, Studio 15B

- Handicap accessible
- Refreshments
- Live demonstration
- Price range: \$2 - \$2,500

melissa.bruck@gmail.com
(808) 866-6045 • www.MelissaBruck.com

62 Rachel Fabbio

Jewelry
Rachel uses precious/semi precious gemstones. Known for her intricate wire wrapping techniques and hand hammered gold. Most pieces are one of a kind.



Haiku
4244 Hana Hwy.

- Refreshments
- Price range: \$50 - \$500

Rachel@adelinaamare.com
(808) 298-6623
www.adelinaamare.com

63 Rick Strini

Glass Blown, Fused, Slumped
Instrumental in the 60's Glass Studio movement, Rick Strini now celebrates over 50 years perfecting his craft and mastery of the medium, glass blowing.



Haiku
Strini Art Glass
263 Manawai Place

- Handicap accessible
- Live demonstration
- Price range: \$10 - and up

rick@striniartglass.com
(808) 572-6283
www.striniartglasscustomlighting.com

Check out our Google Maps on our online artist directory pages at www.MauiOpenStudios.com.
Design your tours using **GPS!**

GO GREEN! SHARE RIDES!

WEEKEND 3 WEST AND SOUTH MAUI OPEN STUDIOS FEB 27 + 28 • 11AM - 6PM



*These maps are not to scale and not guaranteed accurate. We highly recommend that you have a **Maui road map** or **GPS** for more detailed and accurate information during your tours.



Launiupoko is a neighborhood on the southern outskirts of the Lahaina area.



64 Semoia Lin
 Artist Expression, Various Creations as The Piece 'Speaks' to me.
 MajArt, in N.Y. & The Met, fell in love with Monet. Later I was trained by Nikon & Fay Sirkis integrated my two loves & my incessant desire to grow and learn.
Kaanapali
 50 Puu Anoano St. #905
 • Refreshments
 • Live demonstration
 • Price range: \$250 to \$8,000
 Semoia@C-est-Moi.com
 (808) 419-6793
 www.C-est-Moi.com



65 Mastrich Metals Jewelry
 Modern and Unique Wearable Art
 Modern designs incorporating sterling silver fabrication, mixed metals, enameled copper and one of a kind stones. Classic and fun wearable pieces of art.
Lahaina
 Lahaina Arts Society,
 Banyan Tree Park, 648 Wharf St.
 *Closes at 5pm both days.
 • Handicap accessible
 • Live entertainment
 • Price range: \$40 to \$700
 mastrichmetals@gmail.com
 (808) 446-5512
 www.mastrichmetals.com



66 Evan Schauss
 Hand Blown Glass Sculpture Artist
 Evan has been glassblowing since age 12 and is the Artist in Residence at The Hui No'eau. He has demonstrated at universities and art centers around the world.
 schaussglassblowing@gmail.com • (808) 757-6334
 www.MauiBlownGlass.com

Lahaina
 Lahaina Arts Society,
 Banyan Tree Park,
 648 Wharf St.
 *Closes at 5pm both days.
 • Handicap accessible
 • Live entertainment
 • Price range: \$50 - \$20,000



68 Mary Ann Leigh
 Ceramics
 My ceramic artwork is unique. I see something magical in the world, then translate the concept, spin it, and breathe life into it in the form of my artwork.
Lahaina
 Lahaina Arts Society,
 Banyan Tree Park, 648 Wharf St. *Closes at 5pm both days.
 • Handicap accessible
 • Live entertainment
 • Price range: \$15 - \$1,500
 info@lahaina-arts.com
 (808) 661-2028
 www.lahainaarts.com

70 Earl Thompson
 Painting, Mixed Media,
 Graphic Arts
 Fine arts study provided me with the tools, and I continue to evolve today. My intention is to channel my visions onto media and share these emotions with all.
Lahaina
 Lahaina Arts Society,
 Banyan Tree Park, 648 Wharf St.
 *Closes at 5pm both days.
 • Handicap accessible
 • Live entertainment
 • Live demonstration
 • Price range: \$100 - \$5,000
 MauiEarl@aol.com
 (808) 446-6713
 www.earlthompsonart.com



67 Stephen Levine, Everyday Miracles - Maui
 Fine Art Photography
 Stephen's fine art photographs capture brief moments that reveal Maui's beauty.
Lahaina
 Lahaina Arts Society,
 Banyan Tree Park, 648 Wharf St.
 *Closes at 5pm both days.
 • Handicap accessible
 • Live entertainment
 • Price range: \$40 - \$525
 info@lahaina-arts.com
 (808) 572-5725
 www.lahainaarts.com



69 Veena Cahlander
 Dichroic glass jeweler
 Inspired by the beauty and aloha of the island, Veena creates fused dichroic glass jewelry and plates. She is excited to share her art and bring others joy.
Lahaina
 Lahaina Arts Society,
 Banyan Tree Park, 648 Wharf St. *Closes at 5pm both days.
 • Handicap accessible
 • Live entertainment
 • Price range: \$25 - \$300
 info@lahaina-arts.com
 (808) 661-0111
 www.lahainaarts.com



71 Jim Smith
 Mixed Media
 I combine the natural beauty of hand carved exotic woods with the vibrant colors of fused glass to create a unique artform.
Lahaina
 Lahaina Arts Society,
 Banyan Tree Park,
 648 Wharf St.
 *Closes at 5pm both days.
 • Handicap accessible
 • Live entertainment
 • Price range: \$35 - \$25,000
 jimswoodnglass@yahoo.com
 (808) 205-9898
 www.jimswoodnglass.com



72 Drew Sulok of Environmental Eyes
 Artistic Nature and Adventure Photographer
 Adventurer and Photographer, Drew is dedicated to showing the beauty that Maui provides.
Lahaina
 Lahaina Arts Society,
 Banyan Tree Park, 648 Wharf St.
 *Closes at 5pm both days.
 • Handicap accessible
 • Live entertainment
 • Price range: \$75 - \$495
 info@lahaina-arts.com
 (610) 316-9630
 www.lahainaarts.com



73 Joseph Demaree
 Idiomist
 Working within the physical and non physical limitations of the human experience. Educated surrealist, experienced expressionist, impressionable impressionist.
Lahaina
 Lahaina Arts Society,
 Banyan Tree Park,
 648 Wharf St.
 *Closes at 5pm both days.
 • Handicap accessible
 • Live entertainment
 • Live demonstration
 • Price range: \$300 - \$12,000
 idiomism@gmail.com
 (503) 704-1022
 www.josephdemaree.com



74 Jana Lee Aspin and Steve Benjamin

Copper Enamel and Wood Working

Both Jana and Steve have been involved in the visual arts for over 30 years, as artists and business owners of a gallery and woodworking company, respectively.

Lahaina
Lahaina Arts Society,
Banyan Tree Park, 648 Wharf St.

- *Closes at 5pm both days.
- Handicap accessible
 - Live entertainment
 - Live demonstration
 - Price range: \$35 - \$1,200

info@lahaina-arts.com
(808) 214-2806
www.lahainaarts.com



75 Sarah Williams
Painting and Jewelry Design

Sarah captures the beauty and magic of the Hawaiian Islands with miniature to large scale paintings along with one of kind, handmade upcycled leather jewelry.

Lahaina
Lahaina Arts Society,
Banyan Tree Park,
648 Wharf St.

- *Closes at 5pm both days.
- Handicap accessible
 - Live entertainment
 - Live demonstration
 - Price range: \$20 - \$6,000

info@lahaina-arts.com
(415) 754-5898
www.lahainaarts.com



82 Terri Saunders

Chain Maille Jeweler

Terri is a chain maille jewelry specialist. She creates pieces using traditional patterns seen in ancient armor in a variety of metals for both men and women.

Lahaina
Lahaina Arts Society,
Banyan Tree Park, 648 Wharf St.

- *Closes at 5pm both days.
- Handicap accessible
 - Live entertainment
 - Live demonstration
 - Price range: \$15 to \$300

info@lahaina-arts.com
(415) 280-4690
www.lahainaarts.com



83 Shawn Boen Art

Pen and Ink

Originally from the Pacific Northwest, I am a self-taught artist looking to pursue a career in one of the most inspirational and influential places in the world.

Lahaina
Lahaina Arts Society,
Banyan Tree Park, 648 Wharf St.

- *Closes at 5pm both days.
- Handicap accessible
 - Live entertainment
 - Price range: \$25 - \$700

info@lahaina-arts.com
(808) 661-0111 • www.lahainaarts.com



76 Uma Silbey

Jewelry Designer

Termed by People Magazine in the 80's as "one of America's Renaissance Women," Uma is an artist and jeweler, author and musician. Her designs sell worldwide.

Lahaina
Lahaina Arts Society,
Banyan Tree Park, 648 Wharf St.

*Closes at 5pm both days.

- Handicap accessible
- Live entertainment
- Live demonstration
- Price range: \$12 - \$300

Umasilbey@aol.com
(808) 268-7704
www.Umasilbey.com



77 Rob DeCamp

Photographer

The world continually inspires me to explore it's diversity and color. Capturing this ever changing beauty is what really excites me about photography.

Lahaina
Lahaina Arts Society,
Banyan Tree Park, 648 Wharf St.

*Closes at 5pm both days.

- Handicap accessible
- Live entertainment
- Price range: \$5 - \$5,600

info@lahaina-arts.com
(808) 281-1420
www.lahainaarts.com



84 Eric DeMaria

Woodwork

Eric manufactures pens, cutting boards, and boxes from local hardwoods, as well as cabinets and furniture. He has a BFA from the Oregon College of Art & Craft.

Lahaina
Lahaina Arts Society,
Banyan Tree Park, 648 Wharf St.

*Closes at 5pm both days.

- Handicap accessible
- Live entertainment
- Price range: \$65 to \$675

info@lahaina-arts.com
(808) 281-9552
www.lahainaarts.com



85 Nansy Pleger

Portrait Artist & Painter - Impressionist - Various media

International Award-winning Impressionist Painter of People, Pets, Horses, Landscapes, Seascapes, Still Life in various media. Listed artist on www.AskArt.com

Lahaina
Offhand Manor Ohana
322 Front St.

- Handicap accessible
- Food and refreshments
- Live entertainment
- Price range: \$50 - \$6,000

nansyphleger@icloud.com
(808) 662-8642
www.nansyphleger.com



78 Podge Elvenstar

Mixed Media - Oil Paint

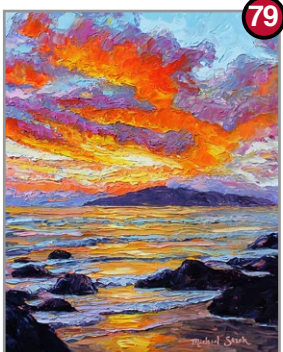
Painted visions inspired by Life on Maui, Podges Evolving Realism contains unusual and interesting visual puzzles with a unique whimsy unlike any other.

Lahaina
Lahaina Arts Society,
Banyan Tree Park, 648 Wharf St.

*Closes at 5pm both days.

- Handicap accessible
- Refreshments
- Live entertainment
- Live demonstration
- Price range: \$30 - \$20,000

Art@PodgeElvenstar.com
(206) 310-8744
www.PodgeElvenstar.com



79 Michael Stark

Oil Impressionist and Marine Fantasy Painter

A self-trained artist, Stark moved to the Pacific at 18. He was honored with a chief title in Samoa, and has had careers as a writer, biologist and artist.

Lahaina
Lahaina Arts Society,
Banyan Tree Park, 648 Wharf St.

*Closes at 5pm both days.

- Handicap accessible
- Live entertainment
- Live demonstration
- Price range: \$39 - \$7,500

stark@maui.net
(808) 298-6186 • www.starkartgallery.com



86 Ann Pistillo

Impressionist Oil Painter

Ann's passion for Maui's lush landscapes and turquoise waters is reflected in her vibrant oil paintings. Visit her studio on the grounds of Maui Mist Gardens.

Lahaina/Launiupoko
51 Paia Pohaku St.

- Refreshments
- Price range: \$25 - \$4,000

annpistillo@me.com
(808) 214-9973
www.AnnPistilloFineArt.com



87 Mary Ann Leigh

Ceramics

My ceramic artwork is unique. I see something magical in the world, then translate the concept, spin it, and breath life into it in the form of my artwork.

Lahaina/Launiupoko
Mary Ann Leigh Ceramics
19 Maluniu Place

- Handicap accessible
- Refreshments
- Price range: \$15 - \$1,500

maryannie@hawaii.rr.com
(808) 661-2028 • www.maryannleigh.com



80 Anyes B.

Oil painter on Canvas, Surfboard and Metal

Immerse yourself in the world of this native French Artist which path has taken her to the understanding of great magical dimensions.

Lahaina
Lahaina Arts Society,
Banyan Tree Park,
648 Wharf St. *Closes at 5pm both days.

- Handicap accessible
- Live entertainment
- Price range: \$35 - \$25,000

info@lahaina-arts.com • (808) 757-8347
www.lahainaarts.com



81 Victoria Wundram

Watercolor, Mixed Media

I love sending my paintings and boxes to live with those who appreciate the joy and vibrant color that are the main ingredients of my artwork.

Lahaina
Lahaina Arts Society,
Banyan Tree Park, 648 Wharf St.

*Closes at 5pm both days.

- Handicap accessible
- Live entertainment
- Price range: \$75 - \$6,000

info@lahaina-arts.com
(808) 661-0111
www.lahainaarts.com



Kihei
20 Kai Makani Loop #202

- Handicap accessible
- Live entertainment
- Price range: \$350 to \$6,500

jerry@fineartmaui.com
(808) 214-6199
www.fineartmaui.com

88 Jerry Sullivan - Fine Art Maui

Realism

Jerry's use of color and passion for Maui are the first thing you notice in her art. You can almost smell the fragrance of her florals and feel the ocean spray.



89 Gary McDonald Thomas

Oil Painting and Sculpture

Gary is a classically trained oil painter and sculptor who studied art and art history in Florence, Italy. His themes range from landscapes to portraiture.

Kihei
760 S. Kihei Rd.,
Menehune Shores #608

- Handicap accessible
- Refreshments
- Price range: \$50 - \$5,000

gmact49@gmail.com
(808) 446-5872
www.garythomasfineart.com



90 Kate Eifler
Potter
Kate has worked with clay for over forty years, always interested in its' endless possibilities. The sights and colors of Maui are inspirational.
Kihei
1636a S. Kihei Rd.
• Handicap accessible
• Refreshments
• Price range: \$25 to \$250
kate.eifler@gmail.com
(808) 268-8919
www.eiflerceramics.com



91 Sherry Ringer
Photography, Educational Media
My photography shows my passion for wildlife. I will include new images from the Ocean, Africa, and 2016 NY Show. Work displayed on canvas, metal, and prints.
Kihei
Dare To Care Photography
1636 S. Kihei Rd.
ringme14@hotmail.com
(949) 735-4470
www.DaretoCarePhotography.com
• Handicap accessible
• Refreshments
• Price range: \$15 - \$500



98 Ed Lane
Oil Painter
Ed's work, called the Art of Exuberance, reflects his love of Hawaii in bold and bright colors of its landscape and people. Shown nationally in 70 juried shows.
Wailea
Ed Lane Studio
195 E. Panana Place
Wailea Kialoa.
Enter 092 at gate to call for entry.
edlane@edlanestudio.com
(808) 875-0828 • www.EdLaneStudio.com
• Refreshment
• Live demonstration
• Price range: \$15 - \$15,000



99 Yasha
Jewelry
"Yasha" bench jeweler, Ph.D engineer, musician, dancer, healer.
"Yasha's jewelry is a unique world class art form." - Michael Gilbert Curator for Waldorf Astoria
Wailea
Joie Taylor Residence
100 Kai La Place
yashajewels@gmail.com
(808) 344-0195
www.yashajewels.com
• Handicap accessible
• Refreshment
• Live demonstration
• Live entertainment
• Price range: \$300 - \$10,000



92 Danny Braddix
Acrylic Artist
DanielBraddix.com - full collection of my artwork.
Kihei
Danny Braddix Art Gallery
1794 S. Kihei Rd.
• Handicap accessible
• Refreshments
• Live entertainment
• Live demonstration
• Price range: \$5 - \$6,000
jaspervan1@yahoo.com
(808) 281-4971
www.Danielbraddix.com



93 Marylyn Holland
Clay and Bronze
Beach glass vessels starting @\$5. Bronze faces starting @ \$285. Karma koins, karma knuggets, free spirit birds, beach glass vessels, Buddha feet...
Kihei
82 Halelani Pl.
• Handicap accessible
• Live demonstration
• Price range: \$5 and up
marylyn82@live.com
(808) 875-6431
www.MarylynHolland.com



94 Sandra Lercari/ Art to Harmony Studio
Kiln-Formed Glass, Acrylic/Watercolor Painting
Functional & Unique Fused Glass Art is featured along with Acrylic & Watercolor Paintings. From glass pendants to large bowls and baskets of bright, bold colors.
Kihei
Art to Harmony Studio
17 Kuli Puu St. (Ke Alii Kai Subdivision)
• Handicap accessible
• Refreshments
• Live demonstration
• Price range: \$25 - \$1,000
sandra@arttoharmony.com
(808) 874-5905
www.arttoharmony.com



95 Christina DeHoff
Mixed Media Painter
It is my pleasure to welcome you to my home and studio. I will be sharing my most recent paintings, prints and new giclee release.
Kihei
35 Kamakoi Place
• Refreshments
• Price range: \$10 - \$15,000
christina.dehoff@gmail.com
(808) 298-2079
www.christinadehoff.com



96 Mauidivegirl Designs
Handmade Jewelry Artist
I am a Maui-based designer with a passion for scuba diving. Adorn yourself with aloha - handmade jewelry inspired by the sea.
Kihei
35 Kamakoi Place
• Refreshments
• Live demonstration
• Price range: \$6 - \$150
LLappeonmaui@yahoo.com
(808) 298-3981
www.mauidivegirl.com



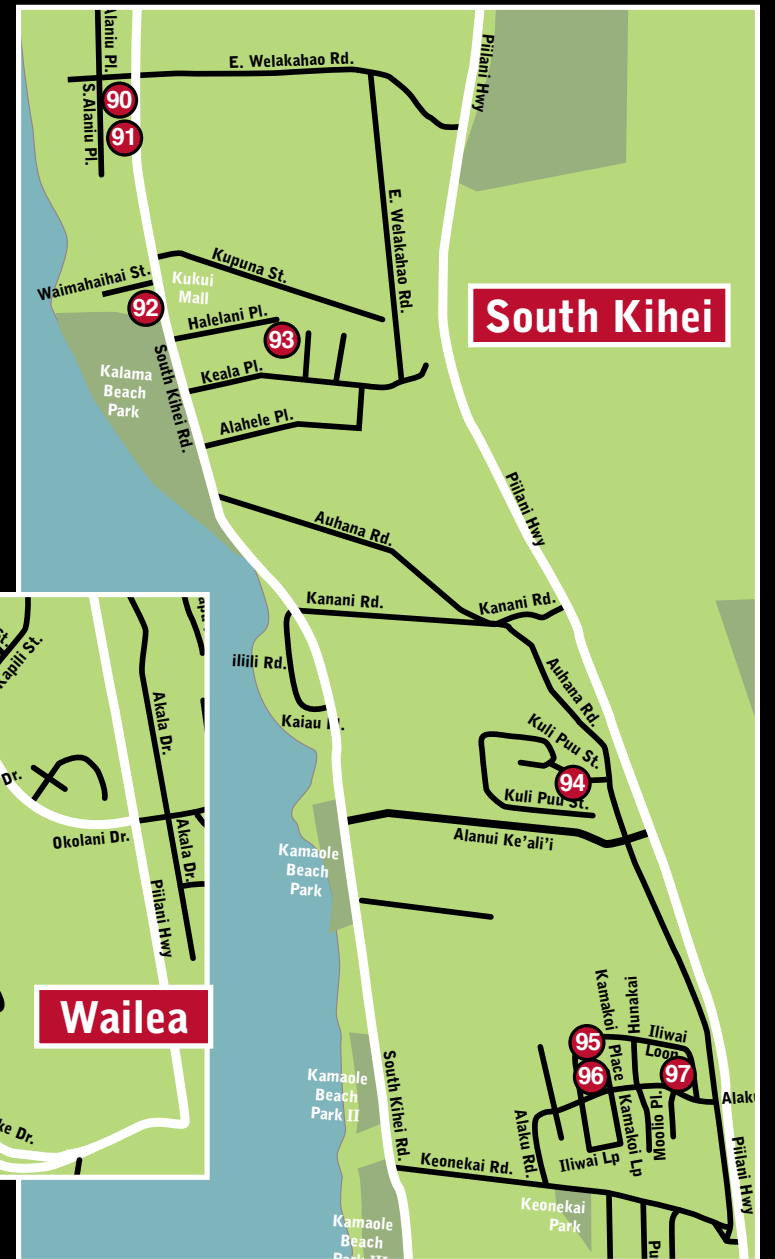
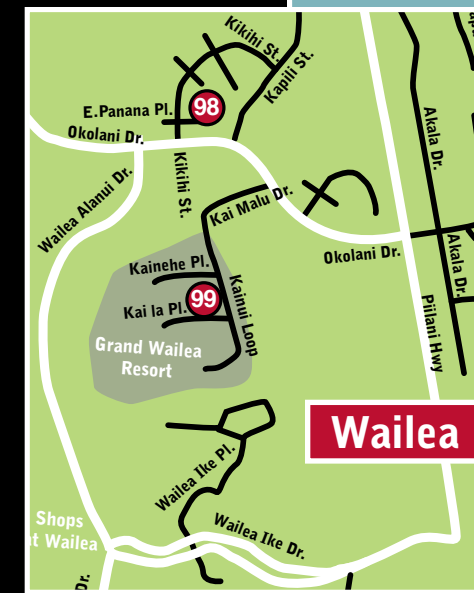
97 Beth Cooper Art
Impressionistic, Fauvism- Acrylic Paintings
Color makes Beth's world go round! The bold use of color is found in her tropical flowers, landscapes and surfing paintings. Beth's work will make you smile.
Kihei
23 Luanaiki Place
• Handicap accessible
• Refreshments
• Price range: \$40 - \$1,800
bethcooperart@me.com
(808) 937-6018
www.bethcooperart.com

WEEKEND 3

WEST AND SOUTH MAUI

OPEN STUDIOS

FEB 27 + 28 • 11AM - 6PM



*These maps are not to scale and not guaranteed accurate. We highly recommend that you have a **Maui road map** or **GPS** for more detailed and accurate information during your tours.



A N N I E L O C K H A R T

www.annielockhart.com

409-539-8441 email annietintx@gmail.com

17 54

C'est Moi Studio
Semoia Lin, Creator
C'est-Moi.com

Visits by Appointment
808 419 6793/Studio
808 870 6235/Call

Happy Chinese New Year
We Ship

64



Roberta Ann Weisenburg

February 13th and 14th
at the Hui No'eau

9

Check out our Google Maps
on our online artist directory pages
at www.MauiOpenStudios.com.

**Design your tours using
GPS!**

GO GREEN! SHARE RIDES!



Proudly Supports Maui Artists

(808)-878-6788 - www.theohanaanimalinn.com

ARTIST 99

Weekend 3 in Wailea

Jasha
As Unique As You
www.yashajewels.com



Saturday Feb 27th

11am-6pm

Refreshments & music at 4pm

RSVP at 8083340195 or

info@yashajewels.com by Feb. 20th

Sunday Feb. 28th 9am-2pm

Grand Wailea Artist Walk

99



"Truly Inspirational"

The Fine Art Photo Collages of Carolyn Quan



Award-Winning, Internationally-Collected Artist. Signed and numbered, limited editions.

Weekend 1: Hui No'eau Visual Arts Center, Makawao and Weekend 2: North Shore Art and Frame, Wailuku

www.CarolynQuan.com

14 56

ARTIST DIRECTORY BY LAST NAME

#49 Alessandro, Taryn
#47 Allan, George
#74 Aspin, Jana Lee +
Steven Benjamin
#80 B., Anyes
#53 Baba, Sean
#30 Bertoia, Lesta
#83 Boen, Shawn
#92 Braddix, Danny
#61 Bruck, Melissa
#34 Bryce, Chelsea
#42 Burnside-Monroe, Susie
#69 Cahlander, Veena
#43 Chamberlain, Dennis
#55 Colby, Mike
#97 Cooper, Beth
#11 Costigan, Maggie
#27 Davis, Janet
#77 DeCamp, Rob
#95 DeHoff, Christina
#73 Demaree, Joseph
#51/#84 - DeMaria, Eric
#58 Detchon, Parker
#40 DiGiacomo, Richard
#90 Eifler, Kate
#78 Elvenstar, Podge
#59 Em
#62 Fabbio, Rachel
#28 Faught, Tom
#46 Fletcher, Joe
#10 Fox, Bonnie
#26 Garcia, Tim

#23 Guillory, Monica
#59 Hahn, Bonnie Sol
#29 Harman, Bruce
#35 Hayes, Pamela
#37 Haywood, Meryl
#93 Holland, Marylyn
#21 Hopper, Joanne
#38 Hufford, Randy
#3 Hui No'eau - Ceramics
#5 Hui No'eau - Jewelry
#4 Hui No'eau - Printmaking
#6 Hui No'eau - Glass Blowing
#20 Jasmine Honey Designs
#98 Lane, Ed
#68/#87 - Leigh, Mary Ann
#94 Lercari, Sandra
#67 Levine, Stephen
#64 Lin, Semoia
#17/#54 - Lockhart, Annie
#1 Lynch, Deb
#65 Mastrich, Devon
#22 Matheis, Julie
#96 Maudivegirl Designs
#13 Klaus, Marianne (MK Maui)
#31 Neswald, Pamela
#45 Omuro, Kevin
#15 Persha, Brian
#8 Peterson, Linda
#86 Pistillo, Ann
#68 Pierce, Virginia
#85 Phleger, Nansy
#16 Power, Shawn

#12/#50 - Pradiga, Lynette
#25 Pufahl, Allen
#14/#56 - Quan, Carolyn
#91 Ringer, Sherry
#41 Roberts, Eva
#32 Santoro, Karuna
#82 Saunders, Terri
#66 Schauss, Evan
#48 Shaner, Frank B.
#76 Silbey, Uma
#24 Simpson, Clay
#18/#71 - Smith, Jim
#19 Sol Hahn, Bonnie
#7 Soward, Sarah
#79 Stark, Michael
#44 Stephens, Jennifer
#63 Strini, Rick
#88 Sullivan, Jerry
#72 Sulock, Drew
#89 Thomas, Gary
#70 Thompson, Earl
#2 Timmins, Ralieg
#57 UH Maui College Art Dept.
#33 U'u, Cathy
#9 Weisenburg, Roberta Ann
#75 Williams, Sarah
#39 Worcester Glassworks
#60 Wright, Gerald
#81 Wundram, Victoria
#99 Yasha
#52 Ybarra, Diane

ARTIST DIRECTORY BY MEDIUM

Ceramics

#3 Hui No'eau - Ceramics
#13 MK Maui
#15 Brian Persha
#28 Tom Faught
#45 Kevin Omuro
#57 UH Maui College Art Dept.
(and other media)
#68/#87 - Mary Ann Leigh
#90 Kate Eifler
#93 Marylyn Holland

Digital Art

#14/#56 - Carolyn Quan
#28 Tom Faught
#64 Semoia Lin

Glass

#6 Hui No'eau - Glass Blowing
#32 Karuna Santoro
#39 Worcester Glassworks
#43 Dennis Chamberlain
#63 Rick Strini
#66 Evan Schauss
#94 Sandra Lercari

Jewelry

#5 Hui No'eau - Jewelry
#9 Roberta Ann Weisenburg
#11 Maggie Costigan
#20 Jasmine Honey Designs
#22 Julie Matheis
#33 Cathy U'u
#62 Rachel Fabbio
#65 Mastrich Metals Jewelry
#69 Veena Cahlander
#82 Terri Saunders
#96 Maudivegirl Designs
#99 Yasha

Metal

#40 Richard DiGiacomo
#74 Jana Lee Aspin +
Steven Benjamin

Mixed Media

#12/#50 - Lynette Pradiga
#16 Shawn Power
#18/#71 - Jim Smith
#44 Jennifer Stephens
#49 Taryn Alessandro
#59 Em
#60 Gerald Wright
#73 Joseph Demaree
#95 Christina DeHoff

Painting (Oil/Acrylic)

#1 Deb Lynch
#7 Sarah Soward
#8 Linda Peterson
#10 Bonnie Fox
#17/#54 - Annie Lockhart
#19 Bonnie Sol Hahn
#21 Joanne Hopper
#23 Monica Guillory
#25 Allen Pufahl
#27 Janet Davis
#29 Bruce Harman
#30 Lesta Bertoia
#31 Pamela Neswald
#37 Meryl Haywood
#41 Eva Roberts
#42 Susie Burnside-Monroe
#46 Joe Fletcher
#47 George Allan
#48 Frank B. Shaner
#52 Diane Ybarra
#53 Sean Baba
#57 UH Maui College Art Dept.
(and other media)
#58 Parker Detchon
#61 Melissa Bruck
#70 Earl Thompson
#78 Podge Elvenstar
#79 Michael Stark
#80 Anyes B.
#85 Nansy Phleger
#86 Ann Pistillo
#88 Jerry Sullivan

#89 Gary Thomas
#92 Danny Braddix
#97 Beth Cooper
#98 Ed Lane

Pastel

#36 Chelsea Bryce
#34 Virginia Pierce
#42 Susie Burnside-Monroe

Pen and Ink

#83 Shawn Boen

Photography

#14/#56 - Carolyn Quan
#38 Randy Hufford
#67 Stephen Levine
#72 Drew Sulock
#77 Rob DeCamp
#91 Sherry Ringer

Printmaking

#4 Hui No'eau - Printmaking

Sculpture

#24 Clay Simpson
#26 Tim Garcia
#89 Gary Thomas

Watercolor

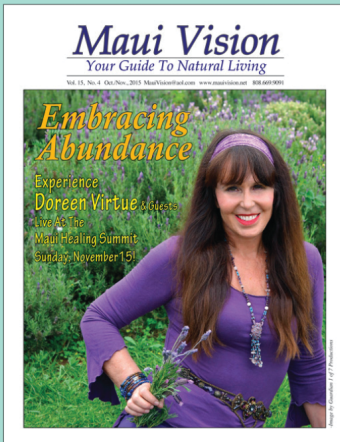
#2 Ralieg Timmins
#35 Pamela Hayes
#42 Susie Burnside-Monroe
#55 Mike Colby
#81 Victoria Wundram
#85 Nansy Phleger

Woodwork

#24 Clay Simpson
#51/#84 - Eric DeMaria
#74 Jana Lee Aspin +
Steven Benjamin

Maui Vision Magazine

Explore natural and holistic living, with articles and Maui resources about yoga, health, spirituality, dance, ecology, diet, exercise, meditation, personal growth, sustainable living, art and culture.



Our advertisers include retail outlets, psychologists, hypnotists, psychics, artists, healthy events listings, acupuncturists, astrologers, massage therapists, natural food purveyors and many alternative healing modalities & practitioners.

You'll find it all in Maui Vision Magazine!

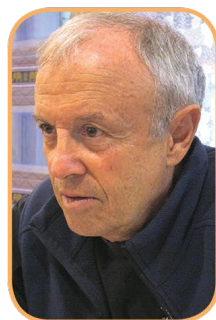
Pick up our free magazine at healthy outlets all over Maui or read us anytime online at:

www.MauiVision.net

And be sure to watch our "Maui Source TV" Channel on YouTube!

Arnie Kotler Editing Services

Arnie Kotler has been a developmental editor since 1979. He is founding Editor & Publisher of Parallax Press & Koa Books



Editing
Coauthoring / Ghostwriting
Packaging
Author Tours & Publicity
Self-Publishing Guidance
Help Getting Published

Books Arnie has edited include:

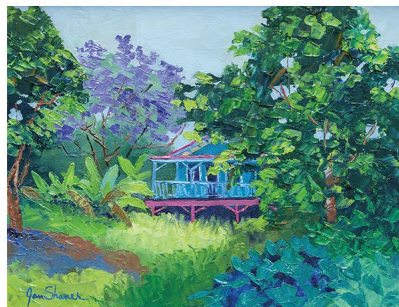
Georgia O'Keeffe's Hawai'i, by Patricia Jennings & Maria Aushman
Peace Is Every Step, Being Peace, & other books by Thich Nhat Hanh
World as Lover, World as Self, by Joanna Macy
Veterans of War, Veterans of Peace, ed. by Maxine Hong Kingston
Dissent: Voices of Conscience, by Colonel (Ret.) Ann Wright
The Wisdom of Sustainability, by Sulak Sivaraksa
Worlds in Harmony, by His Holiness the Dalai Lama
Inner Gold: Understanding Psychological Projection, Robt. A. Johnson
All Beings Cheer You On (forthcoming), by Jack Kornfield

"Arnie's work is absolutely top of the line."
—Olivia Hoblitzelle, author of Ten Thousand Joys & Ten Thousand Sorrows
"Arnie is the intelligent and conscientious editor I had been looking for." —Tom Peek, author of Daughters of Fire

Please be in touch if you might be interested in any of these services.
arniekotler@aol.com • 808-875-7995 • Kihei, Maui

WHAT WILL YOU CREATE?

LEARN MORE AND REGISTER FOR CLASSES @ HUI NO'EAU.COM!



LAHAINA ARTS SOCIETY

Meet 20 artists in one location – under the Lahaina Banyan Tree

WEEKEND 3

February 27th & 28th
9:00am - 5:00pm

original fine art | paintings, photography, ceramics, sculpture, woodwork, jewelry



under the Banyan Tree on Front Street | 648 Wharf Street, Lahaina

www.lahaina-arts.com

808.661.0111

info@lahaina-arts.com



GLASSBLOWING



CERAMICS



PHOTOGRAPHY



KEIKI CLASSES



JEWELRY & METALSMITHING



PRINTMAKING & FIBER



PAINTING & DRAWING

HUI NO'EAU VISUAL ARTS CENTER offers art classes and workshops for artists of all ages and abilities! Located on the slopes of Haleakala just below Makawao town, the Hui is a 501(c)(3) non-profit arts center dedicated to providing a community space to experience and celebrate the visual arts.
2841 BALDWIN AVENUE, MAKAWAO, HAWAII 96768 – HUI NO'EAU.COM – (808) 572-6560



Susie Burnside-Monroe Oils & Watercolors

2315 Kekaulike Ave, Kula, HI | (808)-866-6017 | mauisusie@gmail.com

Come join us - Weekend 1 - February 13th & 14th - 11am to 6pm

Up Kekaulike Ave, past Crater Road, right at The Ohana Animal Inn



Originals, Prints, Giclees, & Valentines for your Honey