

FREE ART TOURS IN FEBRUARY • MAUIOPENSTUDIOS.COM

# FREE GUIDEBOOK

OVER 90 PARTICIPATING ARTISTS AND ARTISANS

SATURDAY FEB. 4 + WEEKENDS of FEB. 11/12 • 18/19 and 25/26

THE 7<sup>TH</sup> ANNUAL  
**MAUI OPEN STUDIOS EVENT 2017**

 SELF-GUIDED TOURS:  
VISIT THE STUDIOS AND EXHIBITION SPACES OF ARTISTS AND ARTISANS ON THE ISLAND OF MAUI, HAWAII  
EVERY FEBRUARY EVERY YEAR



Dawn Yoshimura • Wknd 2



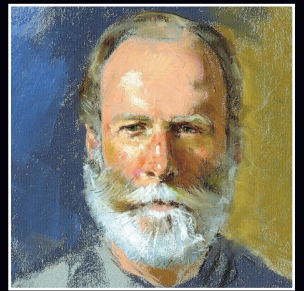
Brian Persha • Weekend 1



James Freeborne Welch • Wknd 3



Roberta Ann Weisenburg • Wknd 3



Jim Lynch • Weekend 1



Rick Strini • Weekend 2



Julia Jenkins • Wknds 2+3



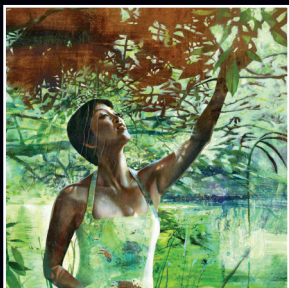
Marylynn Holland • Wknd 1



Christina DeHoff • Wknd 1



Tin Moon Jewelryworks • Wknd 3



Pamela Becker • Weekend 3



Joanne Hopper • Weekend 3



Mary Ann Leigh • Wknd 2



Earl Thompson • Weekend 2



Carolyn Quan • Weekend 1



Kathleen Alexander  
FINE ART WATERCOLORS



FEBRUARY 18-19, 2017 MAUI OPEN STUDIOS WEEKEND #2  
Visit my art studio at 2645-A Aloha Place, Haiku  
www.KathleenAlexanderArt.com

48

EARL THOMPSON ART.COM



808.298.0134

DAKINE FINE ART.COM  
... DO SOMETHING THAT MOVES YOU

37

Welcome to MOS 2017!

We're back for our 7th year and we thank you for being here with us! We are excited to have a number of guest artists participating in MOS this year from the island of Oahu, Big Island, and Sedona! Along with our guests, we have a wonderful, wide range of artists, both new to the event and from years past.

Our 2017 artist roster includes a wonderful mix of emerging artists, some of whom have never shown their work publicly before, to renowned internationally-collected established artists and everything in between. It brings me great joy to be able to facilitate a connection between you and the artists who are participating in the MOS event. Whether you're a first-time collector or a seasoned one, there is something for everyone at MOS. Pick your favorites and away you go!

If you are with us for the first time, welcome to one of Hawaii's most exciting art events. And if you are back for another year of MOS, we hope that you enjoy it as much as you have in the past.

Thank you for joining us and for supporting our Maui art community. Have fun on your tours and happy art collecting!



Aloha, Carolyn Quan  
MOS Producer/Artist

Check out our Google Maps on our online artist directory pages at [www.MauiOpenStudios.com](http://www.MauiOpenStudios.com).

Design your tours using GPS!

GO GREEN! SHARE RIDES!

Thank you to our 2017 Event Sponsors!

whose support helps us to fulfill our mission of connecting artists with art-lovers and art collectors on Maui.



Contents and Event Schedule

Opening Celebration + Preview Exhibition

Saturday, February 4 • 5pm - 8pm  
Pa'ina Culinary Arts Center – Home of Maui Culinary Academy, University of Hawaii Maui College  
310 W. Kaahumanu Ave., Kahului (Pa'ina Building)

Weekend 1 Artist Open Studios

KIHEI + WAILEA

Saturday/Sunday February 11 + 12 • 11am - 6pm

Kihei \_\_\_\_\_ Page 2 - 5  
Wailea \_\_\_\_\_ Page 5

Weekend 2 Artist Open Studios

LAHAINA, CENTRAL, NORTH SHORE + HANA

Saturday/Sunday February 18 + 19 • 11am - 6pm

Kahana and Lahaina \_\_\_\_\_ Page 5 - 9  
Wailuku and Kahului \_\_\_\_\_ Page 9  
Paia and Haiku \_\_\_\_\_ Page 10 - 11  
Hana \_\_\_\_\_ Page 11

Weekend 3 Artist Open Studios

UPCOUNTRY MAUI

Saturday/Sunday, February 25 + 26 • 11am - 6pm

Makawao and Pukalani \_\_\_\_\_ Page 12 - 16  
Kula \_\_\_\_\_ Page 16 - 18

Artist Directory by Last Name Page 19

Artist Directory by Medium Page 20

We encourage you to think GREEN. SHARE rides, SHARE guidebooks or use our paperless website and Google maps to plan your tours. Please recycle this guidebook or keep it for reference throughout the year!

Published and Produced by Dream World Media LLC  
Printed on GO GREEN recycled paper!

\* Information provided in this guidebook was supplied to us by the artists. Any misrepresentation of the artists, artists' locations, their art, or their events is not the responsibility of the organizers.

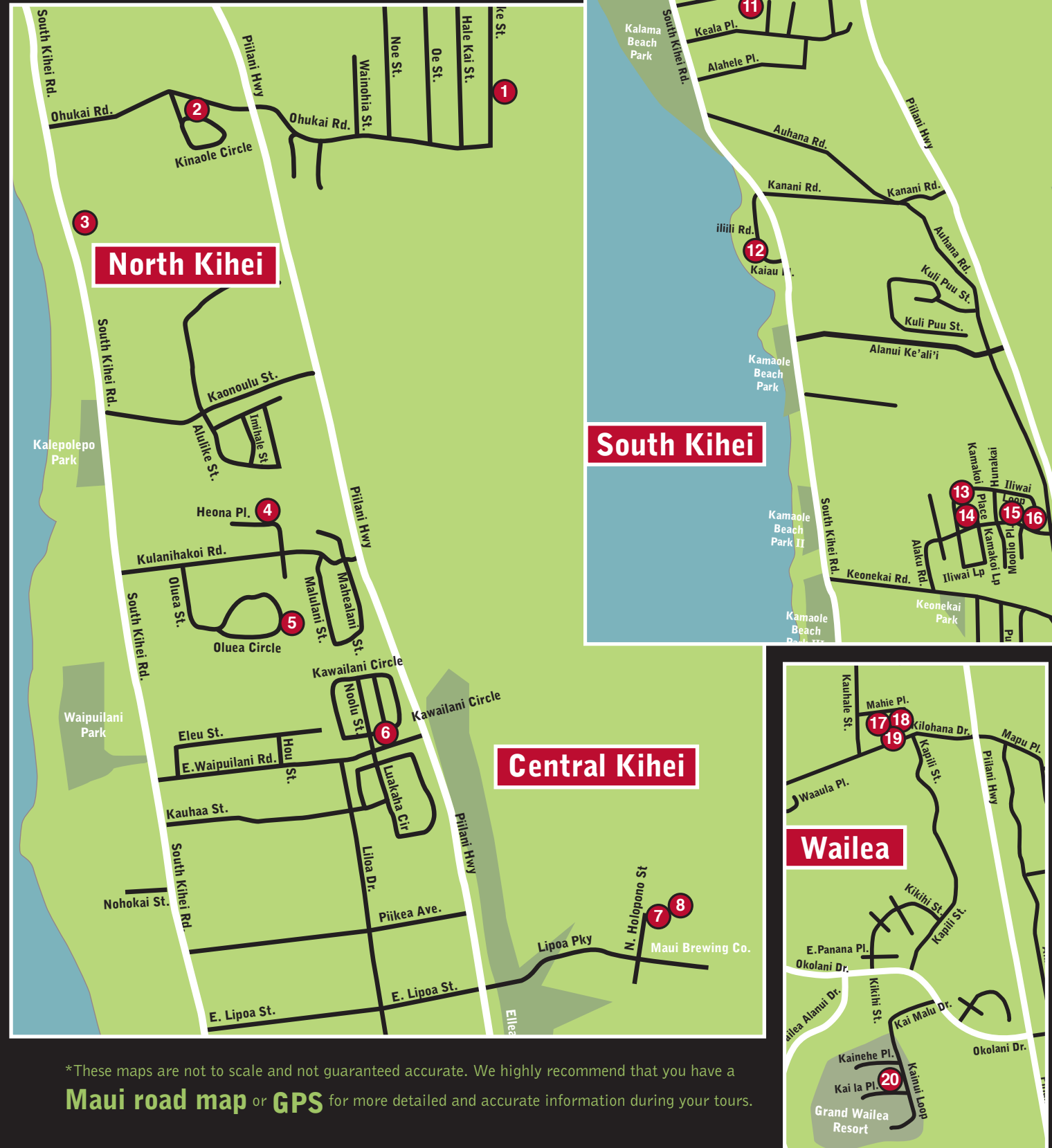


Dream World Media LLC • SF Bay Area, CA  
(415) 450-1307 • [MauiOpenStudios.com](http://MauiOpenStudios.com)  
[mauiopenstudios@gmail.com](mailto:mauiopenstudios@gmail.com)



# WEEKEND 1

**KIHEI AND WAILEA OPEN STUDIOS**  
**FEB 11 + 12 • 11AM - 6PM**



\*These maps are not to scale and not guaranteed accurate. We highly recommend that you have a **Maui road map** or **GPS** for more detailed and accurate information during your tours.

**1 Anne Provost**  
 Mixed Media Fine Art, Photographer, Organic Garden Design  
 Celebrity portraits, Jawz Waves paintings and demonstration, mobiles, interactive photo opportunity with jungle, surfing dolphin & space nebula theme banners.  
**Kihei**  
**335 Hoalike St.**  
 • Handicap accessible  
 • Refreshments  
 • Live demonstration  
 • Price range: \$5 to \$222+  
[alwaysallways@gmail.com](mailto:alwaysallways@gmail.com)  
 (707) 799-1701  
[www.fineartamerica.com/profiles/anne-provost](http://www.fineartamerica.com/profiles/anne-provost)

**3 Jerry Sullivan**  
 Oil Painter, Designer Gemstone Jewelry Artist  
 The atest designer gemstone one-of-a-kind handcrafted jewelry items and beautifully framed Maui scenics, florals and seascapes all in one place.  
**Kihei**  
**20 Kai Makani Loop #202**  
 • Refreshments  
 • Live demonstration  
 • Price range: \$35 to \$4,000  
[jerry@fineartmaui.com](mailto:jerry@fineartmaui.com)  
 (808) 214-6199 • [www.fineartmaui.com](http://www.fineartmaui.com)

**5 Jim Smith**  
 Mixed Media  
 Please join my at my home studio to view my unique one of a kind creations of hand carved hardwoods, fused glass, and oils.  
**Kihei**  
**193 Oluea Circle**  
 • Refreshments  
 • Price range: \$100 - \$18,000  
[jimswoodnglass@yahoo.com](mailto:jimswoodnglass@yahoo.com)  
 (808) 205-9898  
[www.jimswoodnglass.com](http://www.jimswoodnglass.com)

**7 Carolyn Quan**  
 Photo Collage and Mixed Media  
 Award-winning artist. Original photography blended into magical dreamlike creations. Limited edition canvases, metal prints, wall hangings, art cards. Nudes, Animals, Dreams, Hawaiiana, and Floral Collections.  
**Kihei**  
**Maui Economic Development Board**  
**1305 N Holopono St. Suite #1**  
 • Handicap accessible  
 • Refreshments  
 • Price range: \$4 - \$2,100  
[cquanartist@gmail.com](mailto:cquanartist@gmail.com)  
 (415) 450-1307 • [www.CarolynQuan.com](http://www.CarolynQuan.com)

**2 Kim Mosley**  
 Sculptor/Painter  
 Kim's a classically trained artist creating sensual and inspiring sculptures from stone, wood and bronze, also beautiful, serene acrylic and mixed media paintings.  
**Kihei**  
**454 Kinaole Circle**  
 • Handicap accessible  
 • Refreshments  
 • Live demonstration  
 • Price range: \$100 to \$20,000  
[kim@kimmosleycreations.net](mailto:kim@kimmosleycreations.net)  
 (808) 879-7986  
[www.KimMosleyCreations.net](http://www.KimMosleyCreations.net)

**4 Amanda McCumbee**  
 Photorealistic Acrylic Artist  
 Amanda specializes in vibrant photorealistic acrylic paintings that allow the wildlife, beautiful scenery, and aloha spirit to come to life on canvas.  
**Kihei**  
**14 Heona Place**  
 • Handicap accessible  
 • Refreshments  
 • Price range: \$10 to \$3,000  
[amanda@artofamanda.com](mailto:amanda@artofamanda.com)  
 (808) 446-0658 • [www.artofamanda.com](http://www.artofamanda.com)

**6 Jim Lynch**  
 Pastel and oil Painter  
 Jim Lynch, PSA Colorist, is a collected and award winning pastel and oil painter. His paintings are in Collections and Galleries on Maui, Paris, NY, and Ireland.  
**Kihei**  
**24 Kawaiiani Circle**  
 • Handicap accessible  
 • Refreshments  
 • Live demonstration  
 • Price range: \$300 to \$5,000  
[jimlynchart@me.com](mailto:jimlynchart@me.com)  
 (808) 344-4048 • [www.jimlynchart.com](http://www.jimlynchart.com)

**8 Brian J. Persha**  
 Mixed Media Artist  
 Clay, cast bronze & silver, as well as painting, form my metier in 54 years of practice. At 73, I feel I've finally dried out behind the ears and listen well.  
**Kihei**  
**Maui Economic Development Board**  
**1305 N Holopono St. Suite #1**  
 • Handicap accessible  
 • Refreshments  
 • Price range: \$25 to \$3,000  
[brianpersha@gmail.com](mailto:brianpersha@gmail.com)  
 (808) 866-7114

\* Information provided was supplied to us by the artists. Any misrepresentation of the artists' location, their art or their events is not the responsibility of the organizers.



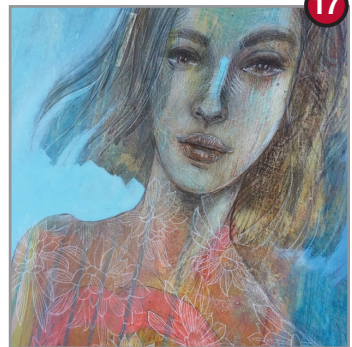


**9 Sherry Ringer**  
Photographer  
Sherry loves to share her world adventures through her photography. She has images from Alaska and Africa to the underwater world of Palau and Maui.  
**Kihei**  
1636 S. Kihei Rd.  
• Handicap accessible  
• Refreshments  
• Price range: \$15 - \$800

ringme14@hotmail.com  
(949) 735-4470  
www.DaretoCarePhotography.com



**10 Kate Eifler**  
Ceramic Artist  
In her past eleven years on Maui, Kate has enjoyed balancing her work as an American Sign Language/English Interpreter and ceramic artist.  
**Kihei**  
1636 S. Kihei Rd.  
• Handicap accessible  
• Refreshments  
• Price range: \$25 to \$500  
kate.eifler@gmail.com  
(808) 268-8919  
www.eiflceramics.com



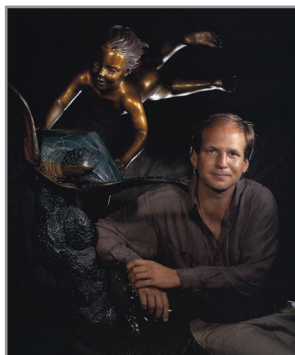
**17 Brad Huck**  
Mixed Media Painter  
I layer and work back into my surface. This additive and subtractive process continues and in the end what I let go of defines the art as much as what remains.  
**Kihei**  
214 Mahie Place  
• Refreshments  
• Price range: \$40 - \$8,000  
bradhuck@gmail.com  
(808) 359-1047  
www.bradhuck.com



**18 Curt Stevens Porcelain**  
Wheel Thrown Porcelain. Ceramics. Functional art Wheel thrown porcelain. Fine functional art. Bowls, vases and cups. Garden entrance and parking on Kilohana Street. Maui made at its best.  
**Kihei**  
214 Mahie Place  
• Handicap accessible  
• Refreshments  
• Live demonstration  
• Price range: \$25 - \$2,000  
curtmaui@gmail.com  
(808) 205-2878 • www.curtmaui.com



**11 Marylyn Holland**  
Clay and Bronze  
Meditation Art that includes: Faces, monks, beach glass vessels, platters. Great specials as I am relocating studio this summer to Texas.  
**Kihei**  
82 Halelani Pl.  
• Handicap accessible  
• Live demonstration  
• Price range: \$25 - \$200+  
marylyn82@live.com  
(808) 264-5045  
www.MarylynHolland.com



**12 Dale Zarrella**  
Sculptor Wood, Stone and Bronze  
Sculptures in wood, stone and bronze bring to life Hawaii's many legends. Dale's best known for his works at the Vatican and Frank Lloyd Wright building, Maui.  
**Kihei**  
2182 iliili Rd.  
• Refreshments  
• Live demonstration  
• Price range: \$150 to \$600,000  
dalezarrella@mac.com  
(808) 250-0448  
www.dalezarrella.com



**19 Valaida D'Alessio**  
Mixed Media/Collage  
I have painted with mixed media and collage for many years. My paintings have become more colorful and include whimsical figures that just appear intuitively.  
**Kihei**  
214 Mahie Place  
• Handicap accessible  
• Refreshment  
• Price range: \$85 - \$500  
valaida37@gmail.com  
(808) 276-3437



**20 Yasha**  
One of A Kind Fine, Fashion, Art Jewelry in Gold and Silver with Gemstones.  
Yasha techniques include fusing, welding, and gem setting. Her designs are featured in "Maui No Ka Oi" and "On Maui", carried in 7 galleries.  
**Wailea**  
Joie Taylor Residence  
100 Kai La Place  
• Handicap accessible  
• Refreshment  
• Live entertainment  
• Price range: \$200 - \$5,000  
yashajewels@gmail.com  
(808) 344-0195 • www.yashajewels.com



**13 Christina DeHoff**  
Mixed Media Painter  
Mixed media painter exploring soulful expression. Originals, Limited Edition Canvases, Metal Prints, Paper Prints and New Mermaid/Fairy inspired clothing line.  
**Kihei**  
35 Kamakoi Place  
• Handicap accessible  
• Refreshments  
• Price range: \$10 - \$15,000

christina.dehoff@gmail.com  
(808) 298-2079 • www.christinadehoff.com



**14 Maudivegirl Designs**  
Handmade Jewelry Artist  
I am a Maui-based designer with a passion for scuba diving. Adorn yourself with aloha - handmade jewelry inspired by the sea.  
**Kihei**  
35 Kamakoi Place  
• Handicap accessible  
• Refreshments  
• Live demonstration  
• Price range: \$5 - \$150

LLapeonmaui@yahoo.com  
(808) 298-3981 • www.maudivegirl.com



**16 Beth Cooper Art**  
Painter, Fauvism Linocut Printer  
Color makes Beth's world go round! The bold use of color is found in her nudes, tropical flowers, landscapes and surf paintings. Her linoprints are new. Come visit!  
**Kihei**  
23 Luanaiki Place  
• Handicap accessible  
• Refreshments  
• Price range: \$25 - \$1,600

bethcooperart@me.com  
(808) 937-6018  
www.bethcooperart.com

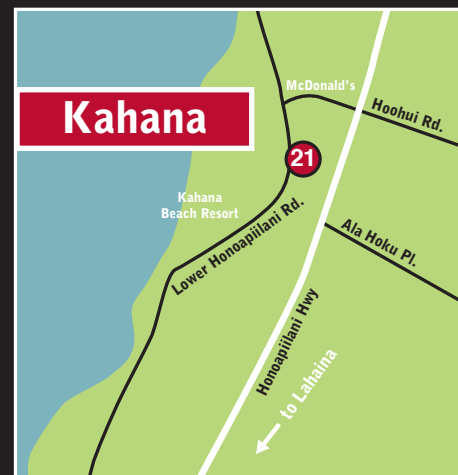


**15 Eric DeMaria**  
Woodwork  
I will be joining Beth Cooper at her studio. I will be showing wooden boxes, cutting boards, and pens. Beth will be showing her brightly colored paintings.  
**Kihei**  
23 Luanaiki Place  
• Handicap accessible  
• Refreshments  
• Price range: \$60 to \$625

keriwoods1@gmail.com  
(808) 281-9552

# WEEKEND 2

**KAHANA, LAHAINA, CENTRAL MAUI, NORTH SHORE + HANA**  
**OPEN STUDIOS**  
**FEB 18 + 19 • 11AM - 6PM**



\*These maps are not to scale and not guaranteed accurate. We highly recommend that you have a **Maui road map** or **GPS** for more detailed and accurate information during your tours.





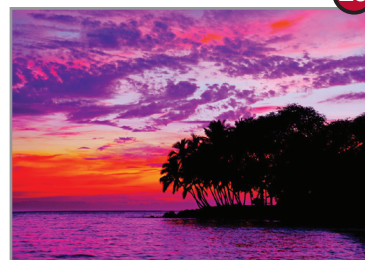
21

**Dee Russell**  
Mixed Media Artist  
Dee Russell is owner of Kahana Fine Arts Studio where she paints and teaches art workshops.  
**Kahana**  
4242 L. Honoapiilani Rd. Kahana Villa Resort  
• Handicap accessible  
• Price range: \$125 - \$1,200  
dee@kahanafinearts.com  
(808) 669-0379  
www.kahanafinearts.com



22

**Jack Reilly**  
Painting  
Internationally recognized for his complex shaped-canvas paintings, widely exhibited in galleries and museums, National Endowment for the Arts grant recipient.  
**Lahaina**  
840 Waine'e St.  
• Handicap accessible  
• Refreshments  
• Live entertainment  
• Price range: \$2,000 - \$20,000  
jackreillyart@gmail.com  
(808) 868-0017 • www.jackreilly.com



29

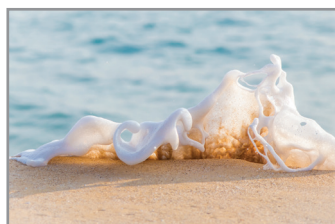
**John O'Leary**  
Photographer  
Nature and wildlife photography available for matted, metal or canvas options.  
**Lahaina**  
Lahaina Arts Society, Banyan Tree Park, 648 Wharf St.  
\*Closes at 5pm both days.  
• Handicap accessible  
• Live entertainment  
• Price range: \$20 - \$500  
info@lahaina-arts.com  
(808) 344-0882  
www.lahainaarts.com



30

**Yasha**  
Jewelry  
Yasha techniques include fusing, welding, and gem setting. Her designs are featured in "Maui No Ka Oi" and "On Maui", carried in 7 galleries.  
**Lahaina**  
Lahaina Arts Society, Banyan Tree Park, 648 Wharf St.  
\*Closes at 5pm both days.  
• Handicap accessible  
• Live demonstration  
• Live entertainment  
• Price range: \$200 - \$5,000  
info@lahaina-arts.com  
(808) 344-0195 • www.lahainaarts.com

23 Environmental Eyes Photography by Drew Sulock



Artistic Nature and Adventure Photographer  
Drew Sulock is dedicated to capturing special moments of our natural surroundings. This photography depicts an artistic view of nature with an adventurous edge.  
**Lahaina**  
Lahaina Arts Society, Banyan Tree Park, 648 Wharf St. \*Closes at 5pm both days.  
• Handicap accessible  
• Live entertainment  
• Price range: \$85 - \$1,495  
info@lahaina-arts.com  
(610) 316-9630  
www.lahainaarts.com



24

**Mastrich Metals Jewelry**  
Handmade Jewelry  
Modern designs incorporating sterling silver fabrication, enameled copper, and mixed metals with one of a kind stones. Classic and fun wearable pieces of art.  
**Lahaina**  
Lahaina Arts Society, Banyan Tree Park, 648 Wharf St.  
\*Closes at 5pm both days.  
• Handicap accessible  
• Live entertainment  
• Price range: \$50 to \$1,000  
mastrichmetals@gmail.com  
(808) 446-5512  
www.mastrichmetals.com



31

**Hill Fine Art Photography**  
Photographer  
Blake culminates his Hollywood Movie experience with his passion for still images and creates stunning pieces of art from flowing lava to swimming with sharks.  
**Lahaina**  
Lahaina Arts Society, Banyan Tree Park, 648 Wharf St.  
\*Closes at 5pm both days.  
• Handicap accessible  
• Live entertainment  
• Price range: \$195 - \$20,000  
info@lahaina-arts.com  
(808) 446-2657 • www.lahainaarts.com



32

**Mary Ann Leigh**  
Ceramics  
My ceramic artwork is unique. I see something magical in the world, then translate the concept, spin it, and breathe life into it in the form of my artwork.  
**Lahaina**  
Lahaina Arts Society, Banyan Tree Park, 648 Wharf St.  
\*Closes at 5pm both days.  
• Handicap accessible  
• Live entertainment  
• Price range: \$15 - \$1,500  
info@lahaina-arts.com  
(808) 661-2028 • www.lahainaarts.com

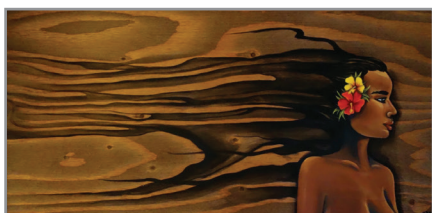


25

**Rob DeCamp**  
Photographer  
The world continually inspires me to explore it's diversity and color. Capturing this ever changing beauty is what really excites me about photography.  
**Lahaina**  
Lahaina Arts Society, Banyan Tree Park, 648 Wharf St.  
\*Closes at 5pm both days.  
• Handicap accessible  
• Live entertainment  
• Price range: \$5 - \$5,600  
info@lahaina-arts.com  
(808) 281-1420  
www.lahainaarts.com

26

**Sarah Williams**  
Painting and Jewelry Design  
Sarah captures the beauty and magic of the Hawaiian Islands with miniature to large scale paintings along with one of kind, handmade leather jewelry.  
**Lahaina**  
Lahaina Arts Society, Banyan Tree Park, 648 Wharf St.  
\*Closes at 5pm both days.  
• Handicap accessible  
• Live entertainment  
• Price range: \$20 - \$2,500  
info@lahaina-arts.com  
(808) 634-7123  
www.lahainaarts.com



33

**Evan Schauss**  
Glass Sculpture Artist  
Hand blown glass sculptures inspired by the ocean and nature. Turtles, whales, waves, sea shells, and octopus are a few of the sculptures available for you.  
**Lahaina**  
Lahaina Arts Society, Banyan Tree Park, 648 Wharf St.  
\*Closes at 5pm both days.  
• Handicap accessible  
• Live entertainment  
• Price range: \$200 - \$10,000  
schaussglassblowing@gmail.com  
(808) 283-6684 • www.SchaussGlassUniverse.com



34

**Amy Sophiella**  
Metalsmith, Jeweler  
Everything is energy! Amy's artisan creations incorporate her love of holistics and interest in the way energy plays in the world to truly empower your journey!  
**Lahaina**  
Lahaina Arts Society, Banyan Tree Park, 648 Wharf St.  
\*Closes at 5pm both days.  
• Handicap accessible  
• Live entertainment  
• Price range: \$30 - \$600  
info@lahaina-arts.com  
(603) 534-3336  
www.lahainaarts.com



27

**Diane Snoey Appler**  
Plein Air Oil Painting  
"Painter of Paradise"- warm landscapes- seascapes of Maui via studio work and plein air, oil paintings. Original oil, and limited edition giclee on canvas.  
**Lahaina**  
Lahaina Arts Society, Banyan Tree Park, 648 Wharf St. \*Closes at 5pm both days.  
• Handicap accessible  
• Live entertainment  
• Live demonstration  
• Price range: \$50 - \$2,400  
info@lahaina-arts.com  
(408) 314-1627 • www.lahainaarts.com



28

**Veena Cahlander**  
Glass Artist  
Dichroic Glass Jewelry and Plates. Intricate yet dynamic one-of-a-kind glass creations.  
**Lahaina**  
Lahaina Arts Society, Banyan Tree Park, 648 Wharf St.  
\*Closes at 5pm both days.  
• Handicap accessible  
• Live entertainment  
• Price range: \$15 - \$500  
info@lahaina-arts.com  
1-800-868-0008 • www.lahainaarts.com



35

**Victoria Wundram**  
Painter: Watercolors, Acrylics Pastels, Oils, and Colored Pencils  
I paint using intense color to express my view of life on Maui. My goal is to make people who experience my art smile and remember a time of feeling happy.  
**Lahaina**  
Lahaina Arts Society, Banyan Tree Park, 648 Wharf St.  
\*Closes at 5pm both days.  
• Handicap accessible  
• Live entertainment  
• Price range: \$40 - \$5,000  
elsiethecat@mac.com  
(808) 214-0500  
www.victoriawundram.com



36

**Marisela Bracho**  
Acrylic/Watercolor/Digital Art. Imaginary and Abstract Landscapes  
Marisela's impressionistic and abstract paintings depict the vitality and emotion of nature; the drama, the joy moving through the elements, plants or animals.  
**Lahaina**  
Lahaina Arts Society, Banyan Tree Park, 648 Wharf St.  
\*Closes at 5pm both days.  
• Handicap accessible  
• Live entertainment  
• Price range: \$25 - \$2,000  
info@lahaina-arts.com  
(808) 283-7927  
www.lahainaarts.com



# WEEKEND 2

## KAHANA, LAHAINA, CENTRAL MAUI, NORTH SHORE + HANA OPEN STUDIOS FEB 18 + 19 • 11AM - 6PM

\*These maps are not to scale and not guaranteed accurate. We highly recommend that you have a **Maui road map** or **GPS** for more detailed and accurate information during your tours.

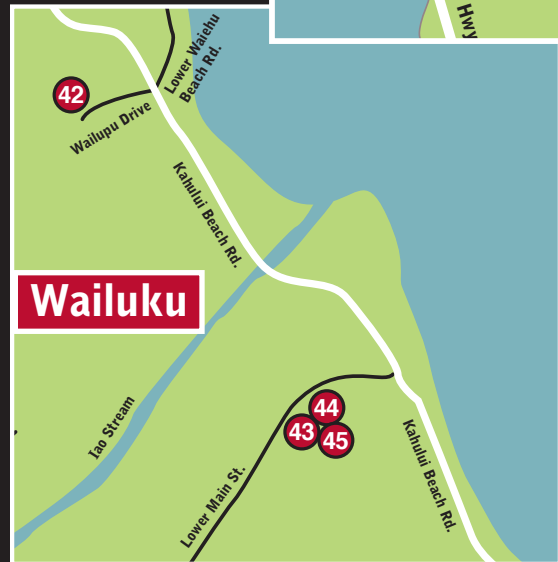


**Lahaina**

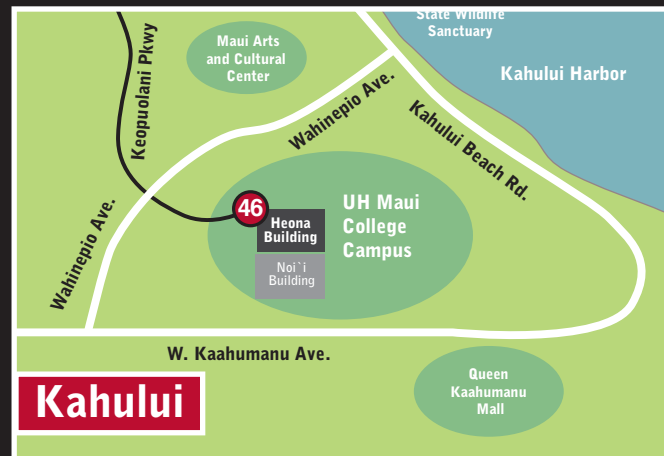
Launiupoko is a neighborhood on the southern outskirts of the Lahaina area.



**Lahaina/Launiupoko**



**Wailuku**



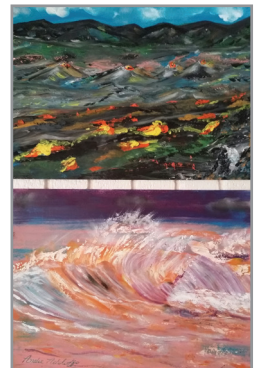
**Kahului**



**37 Earl Thompson**  
Painting, Aluminum Grinding, Pen & Ink, Airbrush  
As fine arts major I studied painting, stone lithography, serigraphy, press printing, photography, among other media. Painting is now my passion.  
**Lahaina**  
**DaKine Fine Art Studio & Gallery - 505 Front St., Suite 225**

DaKineFineArt@gmail.com (808) 727-2295  
www.EarlThompsonArt.com

- Live entertainment
- Live demonstration
- Price range: \$100 - \$5,000



**38 Andre and Sarina Adoloffo**  
Mixed Media  
Original art in any style, medium, size to meet clients specifications and subject matter to exactitude. Wholesale prices only. OPA membership. By appointment.

**Lahaina**  
**475 Front St.**  
• Handicap accessible  
• Refreshments  
• Live demonstration  
• Price range: \$99 - \$499  
aastudio313@gmail.com (808) 212-8556  
www.andreadoloffostudio313.com



**39 Casey McLain**  
Oil Painter  
My oil paintings have an impressionistic, almost loose realism type of feel, which resonates most with what I am trying to communicate.

**Lahaina**  
**30 Paia Pohaku St.**  
• Handicap accessible  
• Refreshments  
• Live demonstration  
• Price range: \$100 - \$10,000

caseymclain@mac.com (612) 298-4953 • www.caseymclain.com



**41 Michelle Griffoul**  
Fused Glass, Porcelain and Tile  
I make functional pottery, dinnerware for home and restaurants, tile for swimming pools and all home applications. I'm now also fusing glass.

**Lahaina**  
**44 Iliahi Way**  
• Handicap accessible  
• Refreshments  
• Price range: \$50 - \$1,000

ellietile@gmail.com (808) 866-2629  
www.michellegriffoul.com



**43 Eric DeMaria**  
Woodwork  
Come to KeriWoods and find woodwork, boxes, cutting boards, and pens from local hardwoods. Dawn and her watercolors and Julia and her paintings.

**Wailuku**  
**KeriWoods**  
**1161 Lower Main St.**  
• Handicap accessible  
• Refreshments  
• Price range: \$65 to \$625

keriwoods1@gmail.com (808) 281-9552



**40 Mary Ann Leigh**  
Ceramics  
My ceramic artwork is unique. I see something magical in the world, then translate the concept, spin it, and breathe life into it in the form of my artwork.

**Lahaina**  
**19 Malunui Place**  
• Handicap accessible  
• Refreshments  
• Price range: \$15 - \$1,500

maryannie@hawaii.rr.com (808) 661-2028  
www.maryannleigh.com



**42 Taryn Alessandro**  
Mixed Media Painter  
"Best of Maui" 6 years and internationally acclaimed artist invites you to her poolside home studio. See her unique fusion of classical and innovative techniques.

**Wailuku**  
**782 Wailupe Drive**  
• Refreshments  
• Live demonstration  
• Live entertainment  
• Price range: \$8 - \$10,000

info@talessandro.com • (530) 618-2796  
www.tarynalessandro.com



**44 Dawn Yoshimura**  
Water and Wax-Based Media  
International watercolorist Dawn Yoshimura believes nature is a book of revelation. She uses harmonious color to create work that invites emotional connection.

**Wailuku**  
**KeriWoods**  
**1161 Lower Main St.**  
• Handicap accessible  
• Refreshments  
• Color Bridges demo 1 - 2pm  
• Price range: \$5 to \$900

pleinairpaintings@dyoshimura.com (808) 726-9698  
www.dyoshimura.com



**45 Julia Jenkins**  
Painter  
A colorful array of prints and paintings to heal the soul and connect one to the divine beauty of Maui.

**Wailuku**  
**KeriWoods**  
**1161 Lower Main St.**  
• Handicap accessible  
• Refreshments  
• Price range: \$35 - \$1,200  
jcjenkins@gmail.com (631) 942-8412  
www.jcjenkins77@gmail.com



**46 UH Maui College Art Dept.**  
Student and Faculty Various Mediums  
Tour UH Maui College Art Dept. Meet the 6 faculty and their students. See or try art in clay, paint, print, or photography. Explore fall course offerings.

**Kahului**  
**UH Maui College Campus**  
**310 West Kaahumanu Ave.**  
**Heona Building - West end of campus**  
• Handicap accessible  
• Live demonstration  
• Price range: \$5 - \$500

jowen@hawaii.edu (808) 984-3202  
www.hawaii.edu/maui/art/index.html



**47 Bruce H. Tapley**  
Jewelry Designer / Goldsmith  
With 45 years experience as a completely self taught Jewelry Designer/Goldsmith, I am proficient in many facets of the Creation and Restoration of Fine Jewelry.  
**Paia**  
96 Hana Hwy  
• Handicap accessible  
• Refreshments  
• Live demonstration  
• Price range: \$150 - \$250,000  
Tapleycollection@aol.com  
(808) 264-4243 • www.TapleyCollection.com

**48 Kathleen Alexander**  
Watercolor  
Fine art watercolors and limited edition prints inspired by the natural beauty of the islands. Painting demonstrations throughout the weekend.  
**Haiku**  
2645 Alohia Pl., Apt. A  
• Refreshments  
• Live demonstration  
• Price range: \$15 - \$5,000  
(808) 283-1166  
studio@kathleenalexanderart.com  
www.KathleenAlexanderArt.com

**51 Gerald Wright**  
Mixed Media Artist  
I have been a full time professional artist for over 15 years. Educated UH Manoa, moved to Hawaii in 1970.  
**Haiku**  
The Treehouse  
375 W. Kuiaha Rd.  
Pauwela Cannery, Unit 24  
• Refreshments  
• Live demonstration  
• Price range: \$2,000 - \$10,000

**52 Rick Strini**  
Glass  
Aloha, I am Rick Strini, I do custom artistic glass blowing. My specialty is Lighting, chandeliers, wall sconces, pendants and table top accessories.  
**Haiku**  
263 Manawai Place  
• Handicap accessible  
• Price range: \$10 - and up  
rick@striniartglass.com  
www.striniartglasscustomlighting.com

**49 Therese Tice**  
Mixed Media  
Original dirt paintings, using a collection of natural pigments from soil found on the Hawaiian islands, transformed to art on canvas.  
**Haiku**  
1605 W. Kuiaha Rd.  
• Refreshments  
• Live demonstration  
• Price range: \$6 - \$25,000  
ticeart@live.com  
(808) 658-0174  
www.maudirtygirlart.com

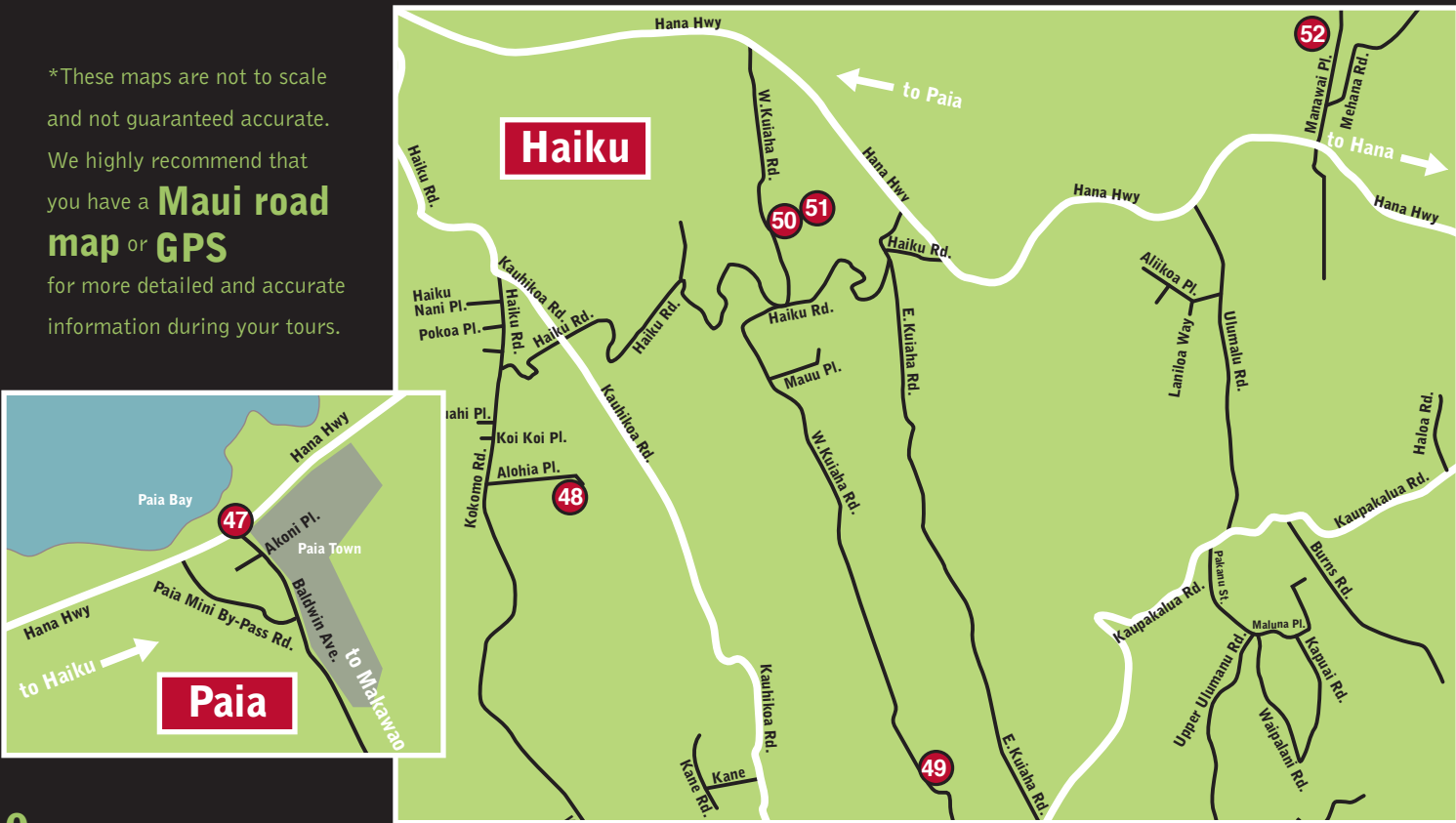
**50 Melissa Bruck**  
Multimedia Visionary Artist  
Bright, colorful, and inspiring; spiritually-infused visionary paintings, realistic colored pencil drawings, intricate digital mandalas and more. A must see!  
**Haiku**  
Studio 14B  
375 W. Kuiaha Rd.  
• Handicap accessible  
• Refreshments  
• Live demonstration  
• Live entertainment  
• Price range: \$1 - \$3,300  
melissa.bruck@gmail.com  
(808) 866-6045  
www.MelissaBruck.com

**53 David Yaeger**  
Hand Shaped and Lathed Local Hardwoods  
David leans towards creating pieces that can be used in every day life for function and natural inspiration. Davids loves nature and farms Cacao in Hana.  
**Hana**  
East Maui Chocolate Farm  
2450 Hana Highway  
• Handicap accessible  
• Live demonstration  
• Price range: \$50 to \$2,000  
chasingthegrain@yahoo.com  
(808) 248-7231  
www.Eastmauiliving.com

**54 Linda Peterson**  
Mixed Media, Acrylic and Wood  
Hand cut and/or carved wooden boxes with acrylic painting embellishments, acrylic painting on canvas, and prints/giclees.  
**Hana**  
Hana Coast Gallery  
5031 Hana Hwy  
• Handicap accessible  
• Live demonstration  
• Price range: \$5 - \$500  
pele96@aol.com  
www.fineartamerica.com/profiles/lindapeterson.html

**WEEKEND 2 KAHANA, LAHAINA, CENTRAL MAUI, NORTH SHORE + HANA OPEN STUDIOS**  
FEB 18 + 19 • 11AM - 6PM

\*These maps are not to scale and not guaranteed accurate. We highly recommend that you have a **Maui road map** or **GPS** for more detailed and accurate information during your tours.



**WEEKEND 2 KAHANA, LAHAINA, CENTRAL MAUI, NORTH SHORE + HANA OPEN STUDIOS**  
FEB 18 + 19 • 11AM - 6PM



**55 Bonnie Sol Hahn**  
Representational Oil Painter  
Vibrant and beautiful oil paintings depicting local scenery and various botanical's. Intimate miniatures as well as large statement works. Painted with Aloha.  
**Hana**  
Hana Coast Gallery  
5031 Hana Hwy  
• Handicap accessible  
• Live demonstration  
• Price range: \$25 to \$2,500  
bonniesol@bonniesol.com  
(808) 769-1747  
www.bonniesol.com

Check out our Google Maps on our online artist directory pages at [www.MauiOpenStudios.com](http://www.MauiOpenStudios.com).  
**Design your tours using GPS!**

**GO GREEN! SHARE RIDES!**



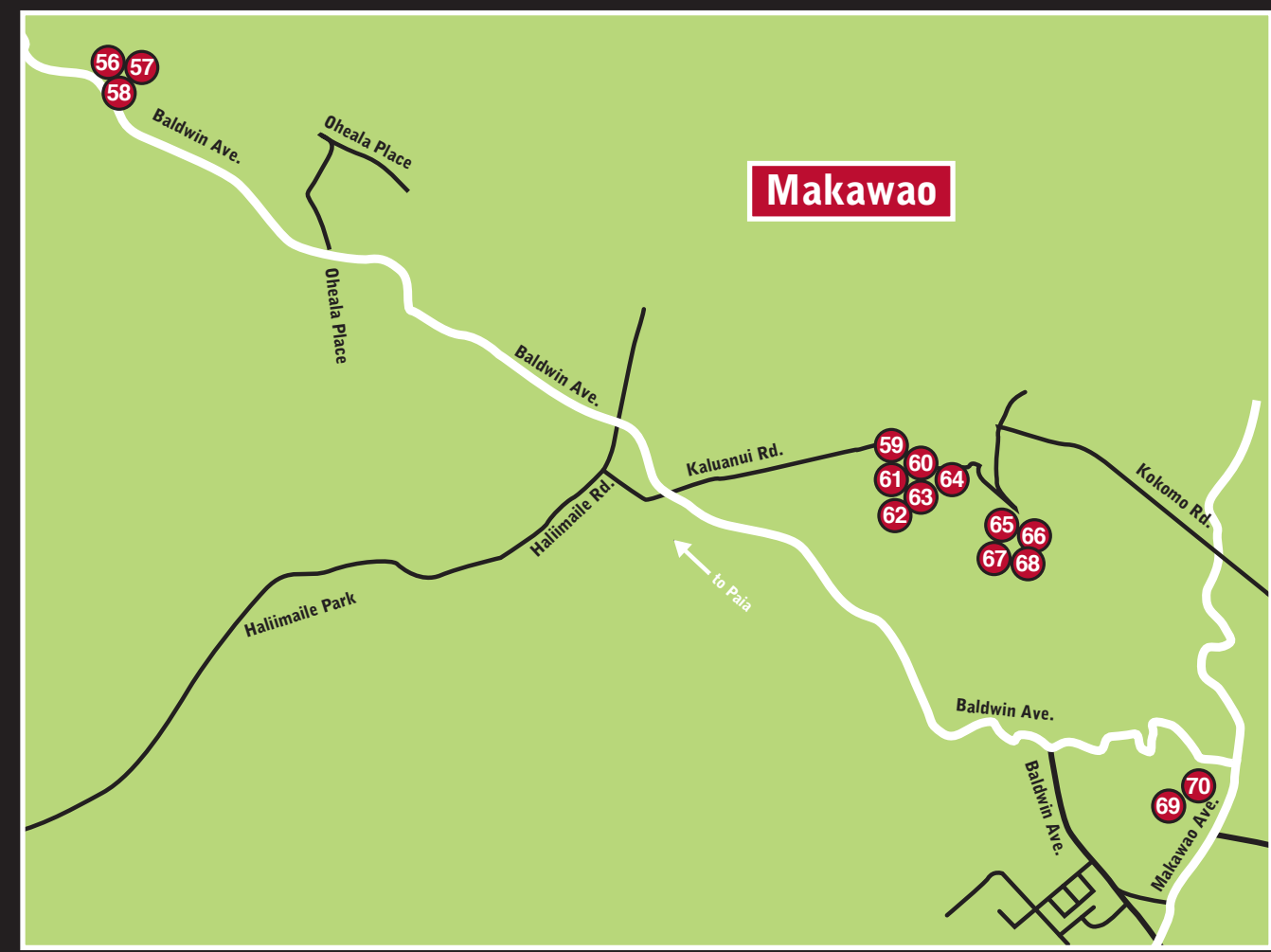
# WEEKEND 3

## UPCOUNTRY MAUI

### OPEN STUDIOS

FEB 27 + 28 • 11AM - 6PM

\*These maps are not to scale and not guaranteed accurate. We highly recommend that you have a **Maui road map** or **GPS** for more detailed and accurate information during your tours.





**56 Joanne Hopper**  
Painter

Oil, mixed media, paintings and drawings focus on the Light and Color of Maui. Landscapes and still life works created in studio and on location. Come See...

**Makawao**  
**Joanne Hopper Studio, Sunnyside Art Alliance, 1799 Baldwin Ave.**

[jhopperartist@gmail.com](mailto:jhopperartist@gmail.com)  
(808) 298-9292  
[www.JoanneHopper.com](http://www.JoanneHopper.com)

- Handicap accessible
- Refreshments
- Live demonstration
- Price range: \$50 - \$5,000



**57 Deb Lynch**  
Painter

Deb has been formally trained in Illustration and Painting, has won awards, and is collected both nationally and internationally.

**Makawao**  
**Sunnyside Art Alliance, 1799 Baldwin Ave.**

[deblynchstudios@gmail.com](mailto:deblynchstudios@gmail.com)  
(808) 214-8908  
[www.deblynch.com](http://www.deblynch.com)

- Handicap accessible
- Live demonstration
- Price range: \$25 - \$2,000




**58 Patti Gildersleeve**  
Impressionist Painter

Maui inspires me to paint! Visit me to see my impressions of Maui's beauty expressed in oils and pastels.

**Makawao**  
**Sunnyside Art Alliance, 1799 Baldwin Ave.**

[patti@gildersleevefineart.com](mailto:patti@gildersleevefineart.com)  
(510) 292-5640  
[www.gildersleevefineart.com](http://www.gildersleevefineart.com)

- Handicap accessible
- Price range: \$10 - \$500



**59 Allen Roger Pufahl**  
Abstract Expressionist

Influenced by New York artists from 1950-60 Allen has developed work in both media for nearly 50 years. He worked privately with a master artist. He has exhibited in San Francisco, Los Angeles and Santa Fe.

**Makawao**  
**Tom Faught Studio 200 Kaluanui Rd.**

[pufahlarp@hawaii.rr.com](mailto:pufahlarp@hawaii.rr.com)  
(808) 280-9376 • [www.allenpufahl.com](http://www.allenpufahl.com)

- Handicap accessible
- Refreshments
- Price range: \$350 to \$4,000




**60 Tim Garcia**  
Sculptor

Tim works in stone, wood, and metal. He has won awards in California and Hawaii, and has participated in symposiums, in New Zealand and California. His work can be found at Viewpoints Gallery in Makawao and Cedar Street Gallery in Honolulu.

**Makawao**  
**Studio Garcia - 200 Kaluanui Rd.**

[26gtimmaui@gmail.com](mailto:26gtimmaui@gmail.com)  
(808) 250-2210  
[www.mauisculpture.com](http://www.mauisculpture.com)

- Handicap accessible
- Refreshments
- Live demonstration
- Price range: \$800 to \$40,000



**61 Edward Baldwin**  
Fine Art Photographer


Aluminum, Gallery Wrap and Acrylic-Metallic will all be on display. All prints are available in a variety of sizes and print styles. Card sets available too!

**Makawao**  
**Tom Faught Studio 200 Kaluanui Rd.**

[edcbee@aol.com](mailto:edcbee@aol.com)  
(808) 214-0501 • [www.flickr.com/photos/ecb808/](http://www.flickr.com/photos/ecb808/)


- Handicap accessible
- Refreshments
- Price range: \$25 to \$850

**Bootzie Gallery**  
JAMES FREEBORNE WELCH  
BOOTZIE - BRITTA ALEXANDRA  
3660 Baldwin Ave. Makawao 808-495-4161



**69 70**


[www.PamelaNeswald.com](http://www.PamelaNeswald.com)  
185 Hiolani St., Pukalani  
(808) 573-2768



**Pamela Neswald**  
Oils on Uniquely Textured Surface

**Weekend 3**

**76**



**62 Janet Davis**  
Painter

Janet has been living and showing her paintings on Maui for over 20 years. Her works can be seen at Viewpoints Gallery and Maui Hands as well as at her studio at 200 Kaluanui in Makawao.

**Makawao**  
**Tom Faught Studio 200 Kaluanui Rd.**

[janet@maui.net](mailto:janet@maui.net)  
[www.janetdavis.com](http://www.janetdavis.com)

- Handicap accessible
- Refreshments
- Live demonstration
- Price range: \$100 - \$7,000



**63 Clay Simpson**  
Wood Sculptor/Fine Furniture

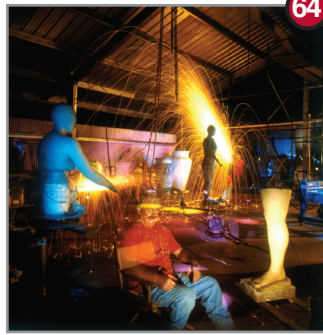
Wildlife Sculpture and fine furnishings in native/exotic woods brought to life with chainsaws, grinders, dremels and hand tools.

**Makawao**  
**Tom Faught Studio 200 Kaluanui Rd.**

[info@simpsonartworks.com](mailto:info@simpsonartworks.com)  
(808) 344-7979  
[www.simpsonartworks.com](http://www.simpsonartworks.com)

- Handicap accessible
- Refreshments
- Price range: Varied





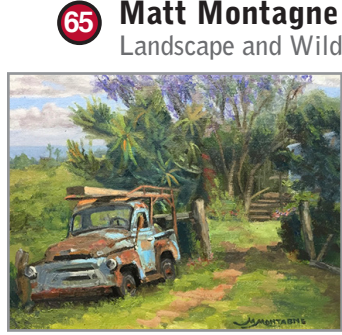
**64 Tom Faught**  
Mixed Medium Artist

A master ceramicist and sculptor, Tom creates custom home furnishings and recently added 2 dimensional digital art on dyed aluminum, to his repertoire.

**Makawao**  
Tom Faught Studio & Foundry  
200 Kaluanui Rd.

- Handicap accessible
- Refreshments
- Price range: \$150 - priceless

faught@maui.net  
(808) 280-1676 • www.tomfaught.com



**65 Matt Montagne**  
Landscape and Wildlife Paintings

When I paint an inspiration that moves me, I want to share that magic with you, hoping you will then be touched through your interaction with that painting.

**Makawao**  
The Sacred Garden of Maliko,  
460 Kaluanui Rd. (off of Baldwin Ave.)

- Handicap accessible
- Refreshments
- Price range: \$225 - \$3,600

matt@mattmontagne.com  
(307) 690-3903  
www.mattmontagne.com



**72 Jeanne Young**  
Original Oil Painter and Sculptor  
Choose your favorite Original Paintings or ask about Portraits and Commissions! Bring this to any Maui Hands Gallery for 10% off my art. exp 2/15/2018.

**Makawao**  
71A Keleawe St.

- Refreshments
- Live demonstration
- Price range: \$350 - \$20,000

youngart@live.com  
(808) 463-4055  
www.jeanneyoung.com



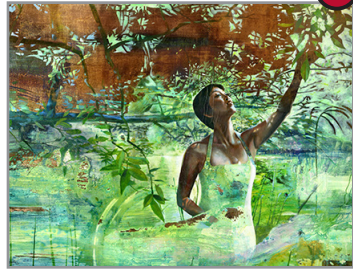
**73 Lynette Pradiga**  
Mixed Media Artist

Aloha, please come see HAPPY paintings, mixed media collage and encaustics. Lots of gifts/coasters/cards/pillows/shower curtains/prints/originals/ DRINKS and PUPUS!

**Makawao**  
71A Keleawe St.

- Refreshments
- Live demonstration
- Price range: \$4 - \$4,000

lynette@lynettepradiga.com  
(808) 633-4573 • www.lynettepradiga.com



**66 Pamela Becker**  
Mixed Media Painter

Dream-world symbolism with soulful portraiture on copper embellished with stone, metal, wood. Originals, prints, cards, chakra banners, lotus altars, monoprints.

**Makawao**  
The Sacred Garden of Maliko,  
460 Kaluanui Rd. (off of Baldwin Ave.)

- Handicap accessible
- Refreshments
- Live demonstration
- Price range: \$9 - \$10,500

pamela@bigvisionarts.com  
(928) 202-6320  
www.PamelaBeckerFineArt.com



**67 Julia Jenkins**  
Painter

A colorful array of prints and paintings to heal the soul and connect one to the divine beauty of Maui.

**Makawao**  
The Sacred Garden of Maliko,  
460 Kaluanui Rd. (off of Baldwin Ave.)

- Handicap accessible
- Refreshments
- Live demonstration
- Price range: \$35 - \$1,200

jcjenkins77@gmail.com  
(631) 942-8412



**74 Roberta Ann Weisenburg**  
Jewelry

Come out and meet Roberta and see her latest line of Hand Made jewelry. Earrings, Bangles and Rings using the ancient techniques of Fusing and Granulation.

**Makawao**  
71A Keleawe St.

- Refreshments
- Price range: \$50 - \$6,500

roberta@roberta-ann.com  
(415) 609-1875  
www.roberta-ann.com



**75 ARTbyRT**  
Raleigh Timmins

Watercolor Oil  
Visit my studio to experience the adventures of many forays Upcountry, Makawao Town, ocean scenes, as well as our unique birds and flowers.

**Makawao**  
185 Hiolani St.

- Handicap accessible
- Price range: \$35 - \$500

Artbyrt@live.com  
(808) 344-1823



**68 Opus Fera the Art of Shay Hachiya**  
Mixed Media

I feel the need as an artist to put something on a surface in order to mark a timeline of life experiences, and narrate those moments.

**Makawao**  
The Sacred Garden of Maliko,  
460 Kaluanui Rd. (off of Baldwin Ave.)

- Handicap accessible
- Refreshments
- Live demonstration
- Price range: \$9 - \$10,500

opusfera@gmail.com  
(808) 557-9294 • www.opusfera.weebly.com



**69 Bootzie - Britta Alexandra**  
Photographer - Nude Essence Images and Jewelry Designer

Bootzie will be showing her latest body of work, which promises to be sensual, naked & sacred. Her jewelry line Sanctuary by Bootzie, will also be displayed.

**Makawao**  
Bootzie Gallery  
3660 Baldwin Ave.

- Handicap accessible
- Refreshments
- Live demonstration
- Price range: \$100 - \$3,000

bootziegallery@hotmail.com  
(808) 298-9030  
www.Bootziegallery.com



**76 Pamela Neswald**  
Oil, Acrylic and Mixed Media

Actual working studio. Broad range includes oil, acrylic and mixed media paintings. Meet the artist. Drink excellent coffee. Get something unique in all the universe.

**Pukalani**  
185 Hiolani St.

- Handicap accessible
- Refreshments
- Live demonstration
- Price range: \$50 - \$14,000

pamelaneswald@gmail.com  
(808) 573-2768



**77 Virginia Pierce**  
Pastel and Watercolor

My work is light and atmospheric. Colors of paradise. I cherish Maui and the challenge of capturing it's essence through color and form.

**Makawao/Pukalani**  
260 Aulii Dr.

- Handicap accessible
- Refreshments
- Live demonstration
- Price range: \$300 - \$5,000

pierce@aloha.net  
(808) 250-6538  
www.virginiapierceart.com



**70 James Freeborne Welch**  
Oil Painter

JFW will be showing at his studio/gallery in Makawao, Bootzie Gallery. Any one mentioning MOS will receive 30% off his body of work.

**Makawao**  
Bootzie Gallery  
3660 Baldwin Ave.

- Handicap accessible
- Refreshments
- Live demonstration
- Price range: \$100 - \$5,000

jamesfreeborne@yahoo.com  
(808) 276-4872 • www.bootziegallery.com



**71 Jeanette Hablewitz**  
Mixed Media Painter/Jeweler

A mixed media painter who expresses her insights from the realm of spirit in a signature contemporary style. Her jewelry is made of antique cultural treasures.

**Makawao**  
1165-A Olinda Rd.,

- Handicap accessible
- Refreshments
- Live demonstration
- Price range: \$50 - \$5,000

hableart@yahoo.com  
(808) 205-7816  
www.jeanettehablewitz.com

PAMELA BECKER FINE ART  
AT THE SACRED GARDEN  
FEBRUARY 25-26

460 Kaluanui Rd (off of Baldwin Ave), Makawao  
928 202 6320  
PamelaBeckerFineArt.com

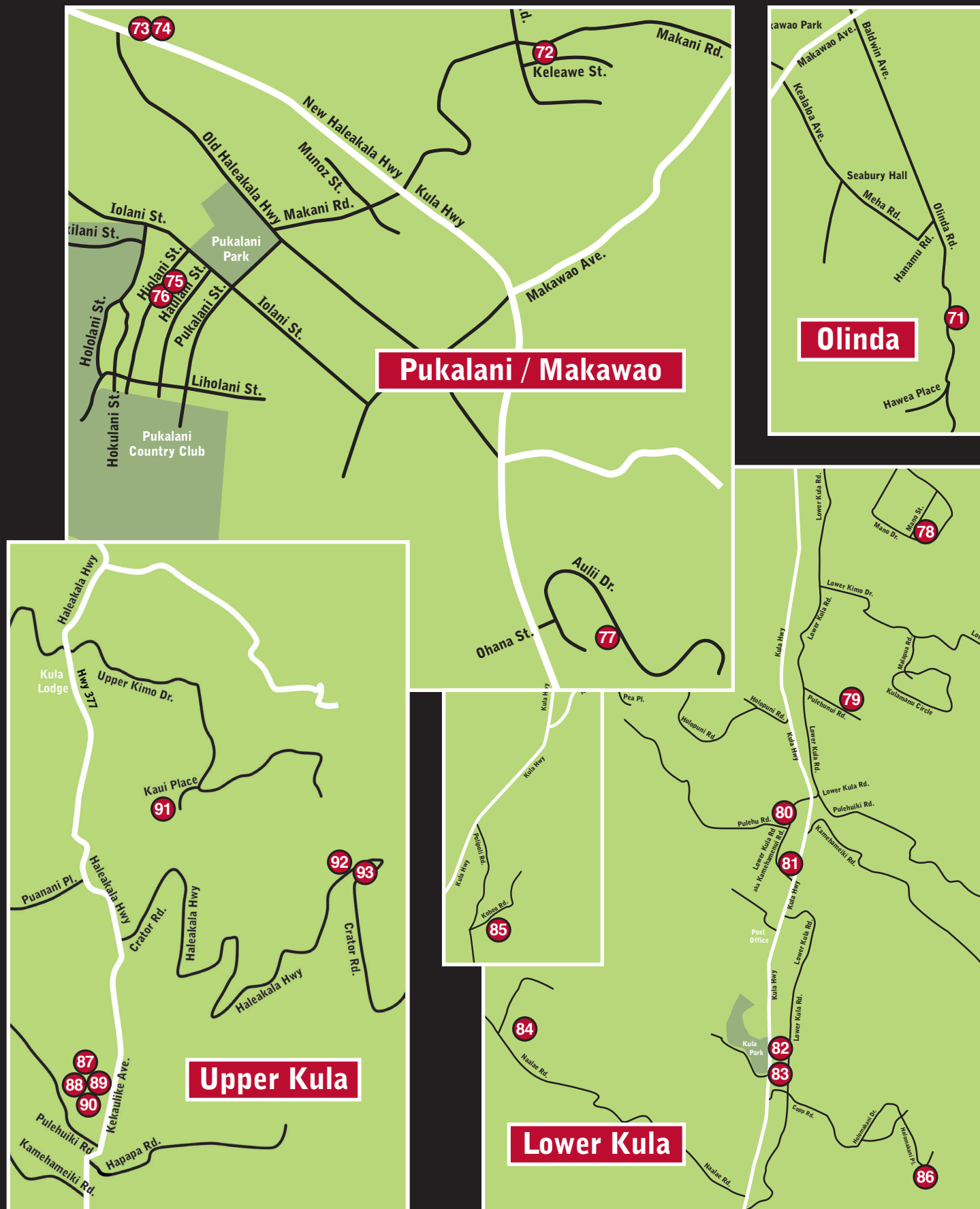


# WEEKEND 3

## UPCOUNTRY MAUI OPEN STUDIOS

FEB 27 + 28 • 11AM - 6PM

WEEKEND 3 • UPCOUNTRY MAUI • FEB 25 + 26 • 11AM - 6PM



**78 Tin Moon Jewelrywork Jewelry**  
 Emily Hickman handcrafts unique earrings, necklaces, and bracelets from recycled vintage tin boxes. Her colorful, eclectic jewelry speaks to one's individuality.  
**Kula**  
**Tin Moon Jewelryworks**  
 37 Manu St.  
 • Handicap accessible  
 • Refreshments  
 • Price range: \$20 - \$275  
 tinmoon@outlook.com  
 (808) 679-5204  
 www.tinmoonjewelryworks.com



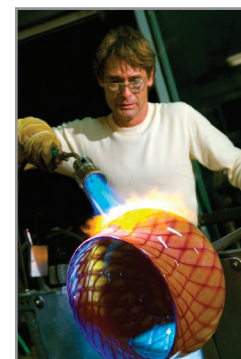
**79 Meryl Haywood**  
 Realism and Surrealism  
 Meryl Haywood is best known for her hypnotic paintings of female forms that are brought to life through surrealism, realism and nature.  
**Kula**  
**215 Pulehu Nui Rd.**  
 • Refreshments  
 • Live demonstration  
 • Live entertainment  
 • Price range: \$20 - \$4,000  
 merylhaywood@gmail.com  
 (808) 344-6855 • www.merylhaywood.com



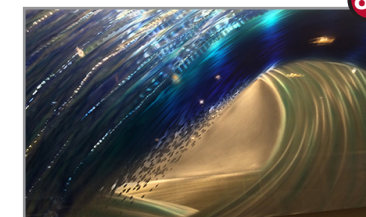
**80 abstractbyadam**  
 Abstract Expressionist  
 Adam Sachs works with acrylics and mixed epoxies to create the feeling of Maui. His work is both has been featured in the Carnevale Gallery in Caesar's Las Vegas.  
**Kula**  
**3410 Lower Kula Rd.**  
 • Handicap accessible  
 • Refreshments  
 • Price range: \$500 - \$15,000  
 amigosax@gmail.com  
 (386) 314-6300  
 www.abstractbyadam.com



**81 Randy Hufford Art**  
 Fine Art Photographer  
 Randy's Art is for those who Love Maui and want to remember the beauty of this beautiful place. Do you want to surround yourself with art that is God Inspired?  
**Kula**  
**Randy Hufford Art Gallery,**  
 3697 Lower Kula Rd.  
 • Handicap accessible  
 • Refreshments  
 • Live entertainment  
 • Price range: \$35 - \$6,000  
 randy@randyhuffordart.com  
 (808) 878-4154 • www.RandyHuffordArt.com



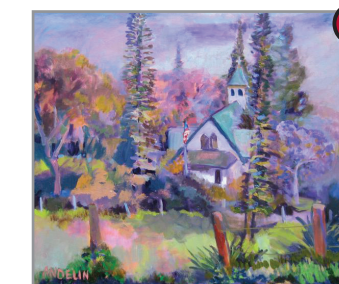
**82 Worcester Glassworks**  
 Handblown Glass and Jewelry  
 Blowing glass since 1969, and the first glass artist on Maui. Now using the Maui sun to run our furnaces. Visit us and enjoy handblown one of a kind glass and jewelry made by the Worcester family.  
**Kula**  
**Worcester Glassworks**  
 4626 Lower Kula Rd.  
 • Handicap accessible  
 • Food and refreshments  
 • Live demonstration  
 • Price range: \$40 - \$6,000  
 info@worcesterglassworks.com  
 (808) 878-4000 • www.worcesterglassworks.com



**83 Richard DiGiamcomo**  
 Etched Aluminum/Mixed Media  
 Be amazed while Rich turns aluminum panels into 3D oceanscape compositions that "Dance" right before your eyes! His "Moving Pictures" are a Must See To Believe!  
**Kula**  
**4758 Lower Kula Rd.**  
 • Handicap accessible  
 • Refreshments  
 • Live demonstration  
 • Price range: \$100 - \$10,000  
 radaz.digiacomol@gmail.com  
 (808) 268-3200  
 www.mauimetalart.com



**84 Eva Roberts**  
 Flow Painter  
 Standing as loving awareness in the all-connectedness of the life force itself and witnessing its fluid expression as poured paint. Prayer-inspired art.  
**Kula**  
**1260 Naalae Rd.**  
 • Handicap accessible  
 • Refreshments  
 • Price range: \$500 - \$15,000  
 sharay@hawaiian.net  
 (808) 346-3165  
 www.EvaRobertsArtist.com



**85 Pamela Andelin**  
 Hawaiian Impressionist  
 Andelin is heralded as a Hawaiian Impressionist with historical import to her work as she seeks to paint a Hawaii that is gradually disappearing.  
**Kula**  
**79 Koheo Rd.**  
 • Refreshments  
 • Price range: \$100 - \$14,000  
 andelin@att.net  
 (808) 286-3710

WEEKEND 3 • UPCOUNTRY MAUI • FEB 25 + 26 • 11AM - 6PM





**86 Rachael Holton**  
Mixed Media Artist  
Rachael Holton is known for her textured and emotionally poignant artwork, bringing fine art to a new height of innovation and vision.  
**Kula**  
**172 Holomakani Place**  
• Handicap accessible  
• Refreshments  
• Price range: \$25 - \$35,000

Rachaeldholton@gmail.com  
(415) 272-1572 • www.RachaelHoltonFineArt.com



**87 Jennifer J. Stephens**  
Mixed Media, Assemblage, Collage  
Collages and assemblage pieces made from vintage ephemera, found objects, photography, drawings and paintings.  
**Kula**  
**Dennis Chamberlain Studios**  
**2831 Kekaulike Ave.**  
• Refreshments  
• Price range: \$10 - \$2,000

info@uniquearthawaii.com  
(808) 276-2314 • www.jenniferjstephens.com



**88 Kevin Omuro**  
Ceramics  
Sculptural and utilitarian pottery influenced by island lifestyles  
**Kula**  
**Dennis Chamberlain Studios**  
**2831 Kekaulike Ave.**  
• Refreshments  
• Price range: \$15 - \$1,000

Pulehuguy@hawaii.rr.com  
(808) 269-1195



**89 Dennis Chamberlain**  
Glass/Sculpture  
4 Artists, 3 Mediums, ONE FABULOUS LOCATION! Tour my glass studio and browse through an eclectic collection of art and sculpture in a spectacular setting.  
**Kula**  
**Dennis Chamberlain Studios**  
**2831 Kekaulike Ave.**  
• Refreshments  
• Price range: \$35 - \$9,500

dennischamberlain@gmail.com  
(808) 298-9331 • www.DennisChamberlainArt.com



**90 Debbie Shimabukuro**  
Kiln Formed Glass Artist  
Capturing the essence of nature through glass is the ultimate challenge. Using both recycled and new glass to create works of art.

**Kula**  
**Dennis Chamberlain Studios**  
**2831 Kekaulike Ave.**  
• Refreshments

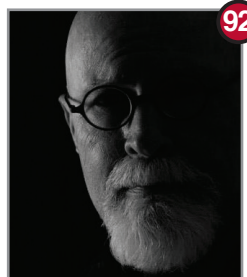
Mauidebs@hawaii.rr.com  
(808) 721-7884



**91 Joe Fletcher**  
Plein Air Oil Paintings  
Everyday I paint someplace on Maui. Come see what I've found. Tiny to huge juicy paintings. As seen in Viewpoints, Village and Hana Coast Galleries.

**Kula**  
**54 Kauai Place**  
• Handicap accessible  
• Refreshments  
• Live demonstration  
• Price range: \$200 - \$10,200

kulaartist@hawaii.rr.com  
(808) 283-1107



**92 Frank B. Shaner**  
Abstract Expressionist  
Frank B. Shaner's outdoor studio is a unique setting that gives inspiration to his exciting works. Wander through the gardens as you talk story with artist.

**Kula**  
**17607 Haleakala Hwy.**  
• Handicap accessible  
• Refreshments  
• Live demonstration  
• Price range: \$75 - \$2,000

rci@maui.net  
(808) 280-5789  
www.fineartamerica.com/profiles/frank-shaner.html?tab=artwork



**93 George Allan**  
Impressionist Oil Painter  
Amidst native trees, my studio is at 4,000 ft. on Haleakala. Enjoy the view and my oils, giclées, and prints or find them at Viewpoints and Village Galleries.

**Kula**  
**17526 Haleakala Hwy**  
• Handicap accessible (one step)  
• Refreshments  
• Live demonstration  
• Price range: \$10 to \$4,000

allans@hawaii.rr.com  
(808) 878-3907  
www.GeorgeAllan.com

# ARTIST DIRECTORY BY MEDIUM

## Ceramics

- #10 Kate Eifler
- #11 Marylyn Holland
- #15 Brian Persha
- #18 Curt Stevens Porcelain
- #32/40 Mary Ann Leigh
- #41 Michelle Griffoul
- #46 UH Maui College Art Dept. (and other media)
- #64 Tom Faught
- #88 Kevin Omuro

## Digital Art

- #7 Carolyn Quan
- #64 Tom Faught

## Glass

- #33 Evan Schauss
- #41 Michelle Griffoul
- #52 Rick Strini
- #82 Worcester Glassworks
- #89 Dennis Chamberlain
- #90 Debbie Shimabukuro

## Jewelry

- #14 Maudivegirl Designs
- #20/30 Yasha
- #24 Mastrich Metals Jewelry
- #28 Veena Cahlander
- #34 Amy Sophiella
- #47 Bruce H. Tapley
- #69 Bootzie - Britta Alexandra
- #74 Roberta Ann Weisenburg
- #78 Tin Moon Jewelryworks

## Metal

- #83 DiGiacomo Fine Art

## Mixed Media

- #1 Anne Provost
- #5 Jim Smith
- #13 Christina DeHoff
- #17 Brad Huck

- #19 Valaida D'Alessio
- #21 Dee Russell
- #22 Jack Reilly
- #42 Taryn Alessandro
- #44 Dawn Yoshimura
- #49 Therese Tice
- #51 Gerald Wright
- #66 Pamela Becker
- #68 Shay Hachiya
- #73 Lynette Pradiga
- #86 Rachael Holton
- #87 Jennifer Stephens

## Painting (Oil/Acrylic)

- #2 Kim Mosley
- #3 Jerry Sullivan
- #4 Amanda McCumbee
- #6 Jim Lynch
- #12 Dale Zarrella
- #16 Beth Cooper
- #22 Jack Reilly
- #27 Diane Snoey Appler
- #36 Marisela Bracho
- #37 Earl Thompson
- #38 Andre and Sarina Adoloffo
- #39 Casey McLain
- #45/67 Julia Jenkins
- #46 UH Maui College Art Dept. (and other media)
- #50 Melissa Bruck
- #54 Linda Peterson
- #55 Bonnie Sol Hahn
- #56 Joanne Hopper
- #57 Deb Lynch
- #58 Patti Gildersleeve
- #59 Allen Pufahl
- #62 Janet Davis
- #65 Matt Montagne
- #70 James Freeborne Welch
- #71 Jeanette Hablewitz
- #72 Jeanne Young
- #76 Pamela Neswald
- #79 Meryl Haywood
- #84 Eva Roberts

- #80 abstractbyadam
- #85 Pamela Andelin
- #91 Joe Fletcher
- #92 Frank B. Shaner
- #93 George Allan

## Pastel

- #77 Virginia Pierce

## Photography

- #7 Carolyn Quan
- #9 herry Ringer
- #23 Drew Sulock
- #25 Rob DeCamp
- #29 John O'Leary
- #31 Hill Fine Art Photography
- #61 Edward Baldwin
- #69 Bootzie - Britta Alexandra
- #81 Randy Hufford
- #92 Frank B. Shaner

## Sculpture

- #2 Kim Mosley
- #12 Dale Zarrella
- #60 Tim Garcia
- #63 Clay Simpson

## Watercolor

- #35 Victoria Wundram
- #44 Dawn Yoshimura
- #48 Kathleen Alexander
- #75 Ralieggh Timmins

## Woodwork

- #15/43 Eric DeMaria
- #53 David Yaeger
- #63 Clay Simpson



# ARTIST DIRECTORY BY LAST NAME

- |                                 |                               |                         |                             |
|---------------------------------|-------------------------------|-------------------------|-----------------------------|
| #80 abstractbyadam              | #91 Fletcher, Joe             | #2 Mosley, Kim          | #52 Strini, Rick            |
| #38 Adoloffo, Andre and Sarina  | #60 Garcia, Tim               | #76 Neswald, Pamela     | #3 Sullivan, Jerry          |
| #42 Alessandro, Taryn           | #58 Gildersleeve, Patti       | #29 O'Leary John        | #23 Sulock, Drew            |
| #48 Alexander, Kathleen         | #41 Griffoul, Michelle        | #88 Omuro, Kevin        | #47 Tapley, Bruce H.        |
| #69 Alexandra, Bootzie - Britta | #71 Hablewitz, Jeanette       | #8 Persha, Brian        | #37 Thompson, Earl          |
| #93 Allan, George               | #68 Hachiya, Shay             | #54 Peterson, Linda     | #49 Tice, Therese           |
| #85 Andelin, Pamela             | #55 Hahn, Bonnie Sol          | #77 Pierce, Virginia    | #75 Timmins, Raliegh        |
| #27 Appler, Diane Snoey         | #79 Haywood, Meryl            | #73 Pradiga, Lynette    | #78 Tin Moon Jewelryworks   |
| #61 Baldwin, Edward             | #31 Hill Fine Art Photography | #1 Provost, Anne        | #46 UHMC Art Dept.          |
| #66 Becker, Pamela              | #11 Holland, Marylyn          | #59 Pufahl, Allen       | #74 Weisenburg, Roberta Ann |
| #36 Bracho, Marisela            | #86 Holton, Rachael           | #7 Quan, Carolyn        | #70 Welch, James Freeborne  |
| #50 Bruck, Melissa              | #56 Hopper, Joanne            | #22 Reilly, Jack        | #26 Williams, Sarah         |
| #28 Cahlander, Veena            | #17 Huck, Brad                | #9 Ringer, Sherry       | #82 Worcester Glassworks    |
| #89 Chamberlain, Dennis         | #81 Hufford, Randy            | #84 Roberts, Eva        | #51 Wright, Gerald          |
| #16 Cooper, Beth                | #45/67 Jenkins, Julia         | #21 Russell, Dee        | #35 Wundram, Victoria       |
| #62 Davis, Janet                | #32/40 Leigh, Mary Ann        | #33 Schauss, Evan       | #53 Yaeger, David           |
| #25 DeCamp, Rob                 | #57 Lynch, Deb                | #92 Shaner, Frank B.    | #20/30 Yasha                |
| #13 DeHoff, Christina           | #6 Lynch, Jim                 | #90 Shimabukuro, Debbie | #44 Yoshimura, Dawn         |
| #19 D'Alessio, Valaida          | #24 Mastrich, Devon           | #63 Simpson, Clay       | #72 Young, Jeanne           |
| #15/43 DeMaria, Eric            | #14 Maudivergirl Designs      | #5 Smith, Jim           | #12 Zarrella, Dale          |
| #83 DiGiacomo, Richard          | #4 McCumbee, Amanda           | #34 Sophiella, Amy      |                             |
| #10 Eifler, Kate                | #39 McLain, Casey             | #87 Stephens, Jennifer  |                             |
| #64 Faught, Tom                 | #65 Montagne, Matt            | #18 Stevens, Curt       |                             |

Three Hundred Artists and Artisans.

Four Inviting Locations.

One Respected Name:

**M·A·U·I·H·A·N·D·S**

Makawao Ave., Makawao 808-572-2008  
 Hana Hwy., Pā'ia 808-579-9245  
 Front St., Lahaina 808-667-9898  
 Hyatt Regency, Ka'anapali 808-667-7997

hyatt@mauihands.com paia@mauihands.com lahaina@mauihands.com hyatt@mauihands.com

1-800-352-4ART(4278) www.mauihands.com

Multiple award-winning gallery • Celebrating art in Hawai'i since 1992

Explore the Art of Healthy Living with

## Maui Vision Magazine

Delve into natural and holistic living, with articles and Maui resources about yoga, health, spirituality, dance, ecology, diet, exercise, meditation, personal growth, sustainable living, art and culture.

Our advertisers include retail outlets, psychologists, hypnotists, psychics, artists, healthy events listings, acupuncturists, astrologers, massage therapists, natural food purveyors and many alternative healing modalities & practitioners.



You'll find it all in Maui Vision Magazine!

Pick up our free magazine at healthy outlets all over Maui or read us anytime online at:

[www.MauiVision.net](http://www.MauiVision.net)

Meet 14 Artists in one location -  
Under the Lahaina Banyan Tree

Weekend 2

February 18th & 19th, 2017

9:00am - 5:00pm

Original Fine Art

PAINTINGS • PHOTOGRAPHY • CERAMICS  
SCULPTURE • WOODWORK • JEWELRY • GLASS ART



lahaina-arts.com | 808.661.0111

Under the Banyan Tree on Front Street | 648 Wharf Street, Lahaina

## HUI NO'EAU VISUAL ARTS CENTER



Celebrating 100 Years of Kahuānui in 2017!

Youth & Adult Art Classes • Year Round Open Studios  
Exhibitions • Gift Shop • Historic Estate & Garden Tours

Open Daily 9am - 4pm • FREE Admission

2841 Baldwin Ave. Makawao, HI 96768  
808-572-6560 • huinoeau.com

## MAUI SCHOOL OF ART



- Painting Methods & Techniques
- Landscape and Plein Air
- Classical Realism
- Impressionism
- Photo Realism
- Life Drawing
- Airbrush
- Modern



840 Waive'e Street, Lahaina, HI 96761  
808-868-0017  
MauiSchoolofArt.com



© 2017 Maui School of Art



# Celebrate

with the 2017 Maui Open Studio Artists

AT OUR **OPENING CELEBRATION** AND **PREVIEW EXHIBITION**

**SATURDAY FEBRUARY 4** from 5pm - 8pm

Pa'ina Culinary Arts Center – Home of Maui Culinary Academy

University of Hawaii Maui College • 310 W. Kaahumanu Ave., Kahului

- Meet many of the artists in person.
- Preview artist's work to help you design your tours.
- Pick up more copies of the MOS Guidebook.
- Live music. Complimentary wine. Food trucks.
- Pastries by culinary arts students.



Followed by 3 Weekends of Artist Open Studios and Exhibitions  
**FEBRUARY 11/12 • 18/19 • 25/26** from 11am - 6pm



[www.MauiOpenStudios.com](http://www.MauiOpenStudios.com)